



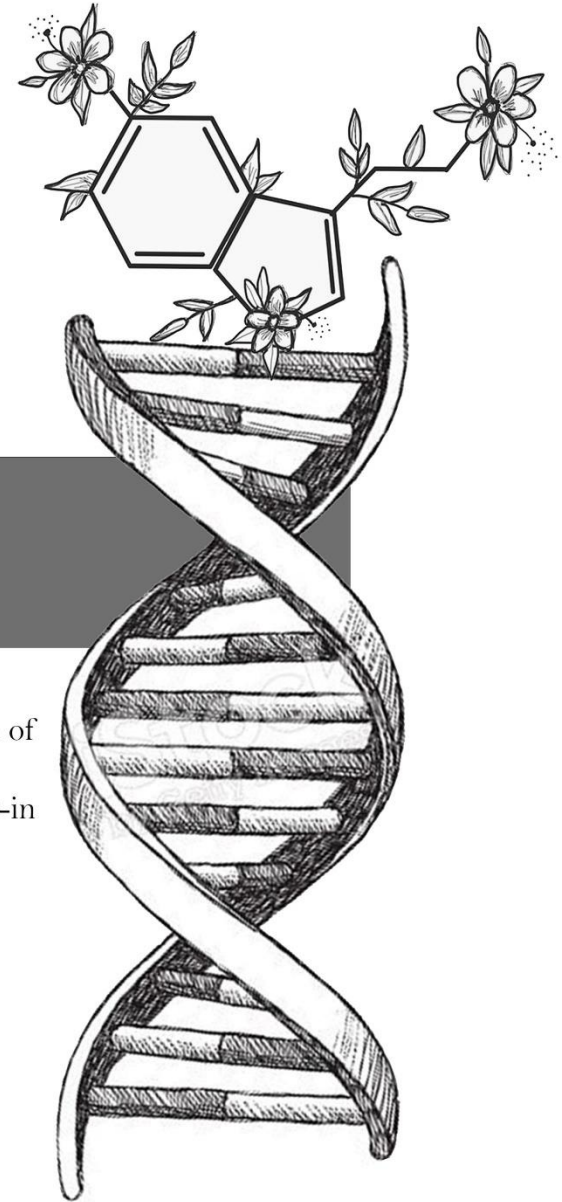
INTERIOR STUDIO I
INT- 232-006

The Urban Loft

MARY VIVIANA BALRAJ

Concept Statement

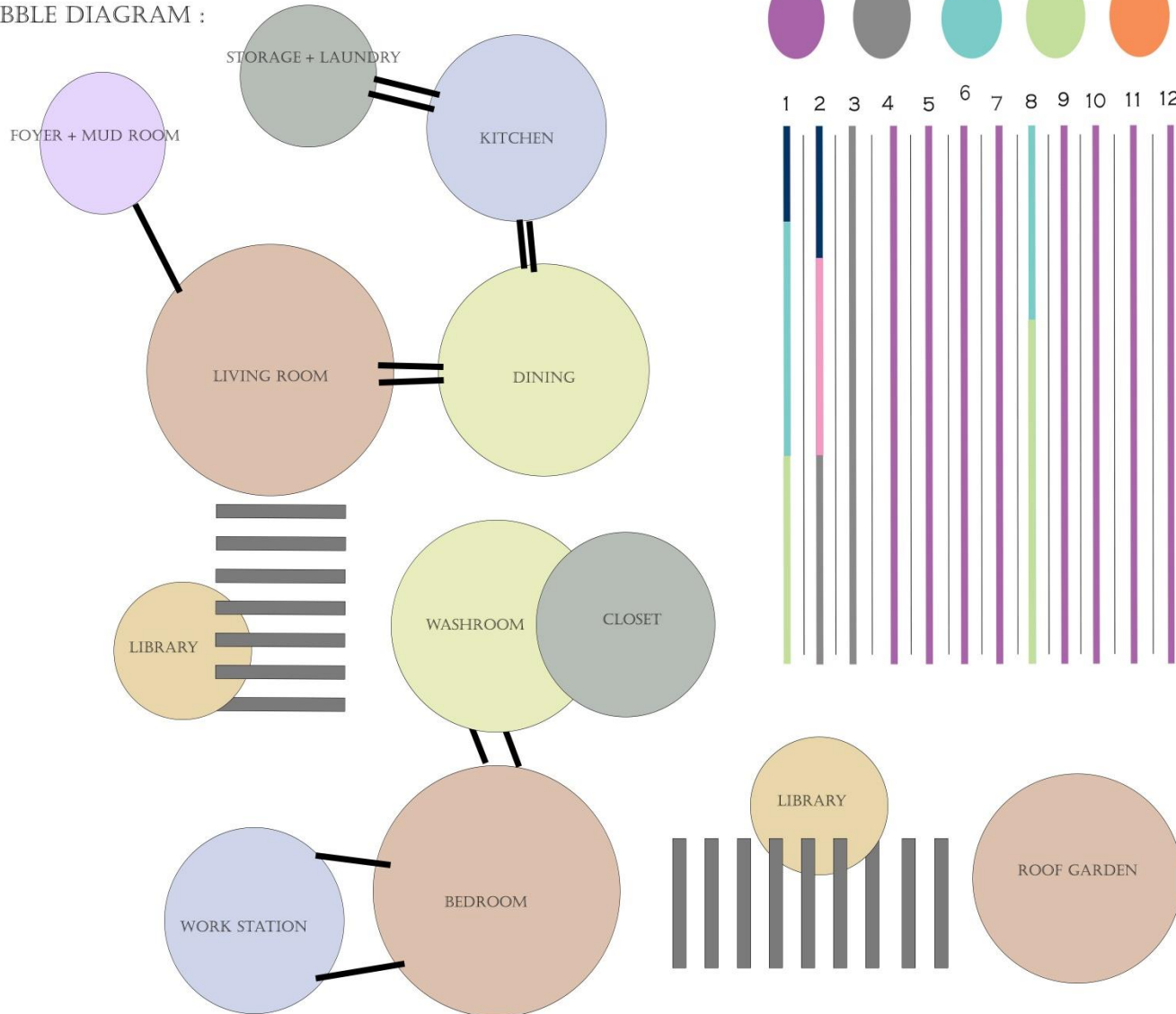
This residence is designed for a female biologist who specialises in Human Genetics. The design of this house presents an open floor plan with a focus on communication of spaces while also providing her with personal areas. The design contrasts open and closed spaces through vertical wooden louvres and a sculptural stairway with a built-in bookshelf that abstracts the helical structure.



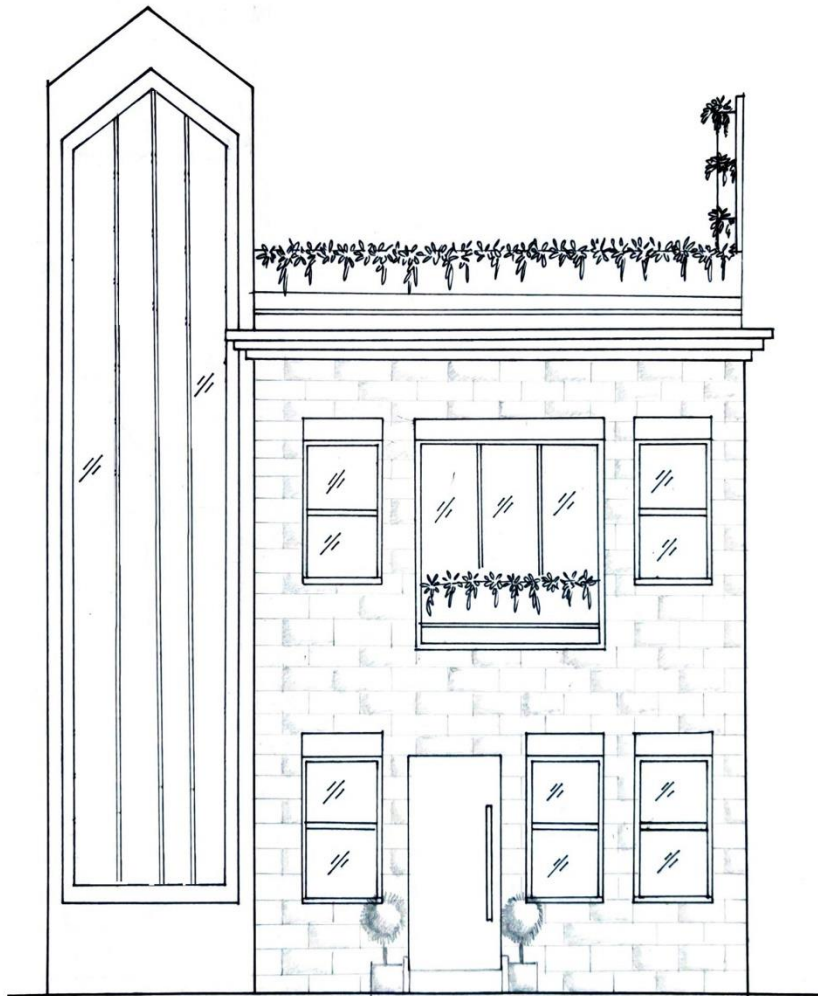
THE URBAN LOFT

MARY VIVIANA BALRAJ

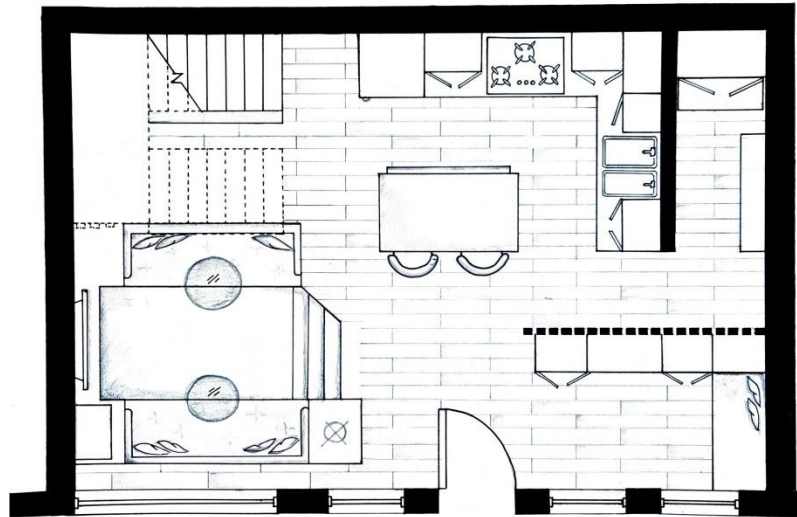
BUBBLE DIAGRAM :



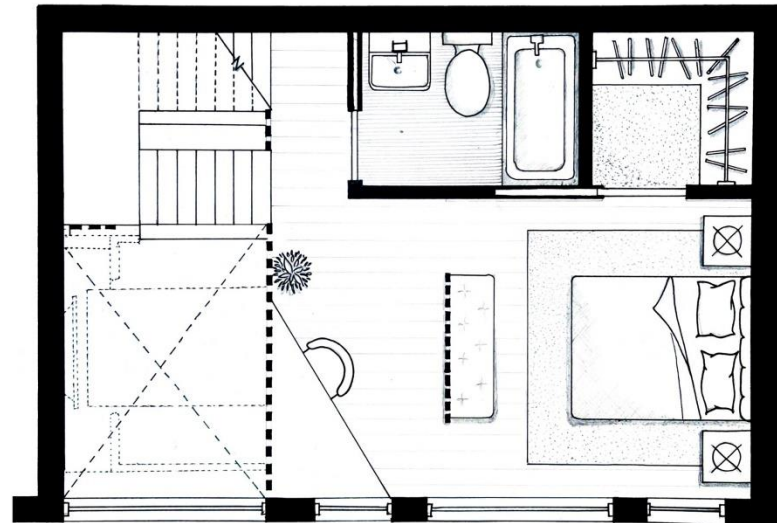
The residence is designed for a female who specialises in Molecular Genetics. The Client has varied interests and is very contemporary in spirit, gregarious in nature but appreciates her privacy and a sense of solitude. She is passionate about her profession and would have her space reflect her passions in a 3-dimensional form.



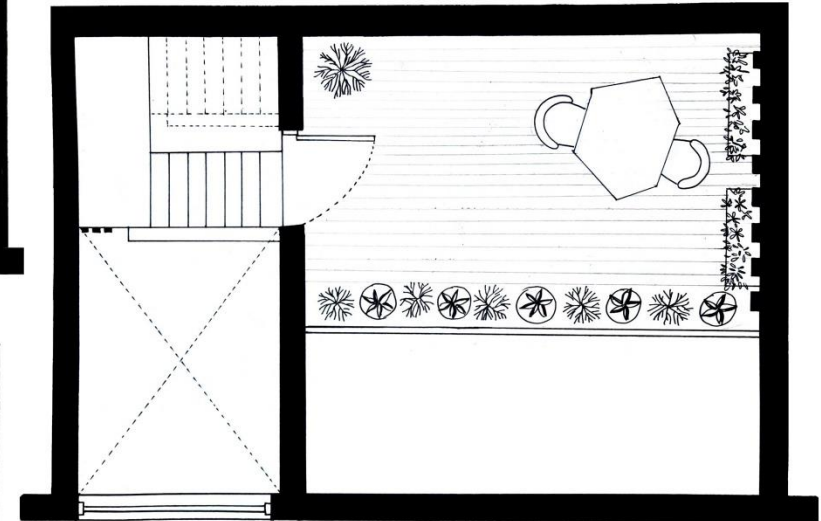
FRONT ELEVATION



FIRST FLOOR PLAN



SECOND FLOOR PLAN



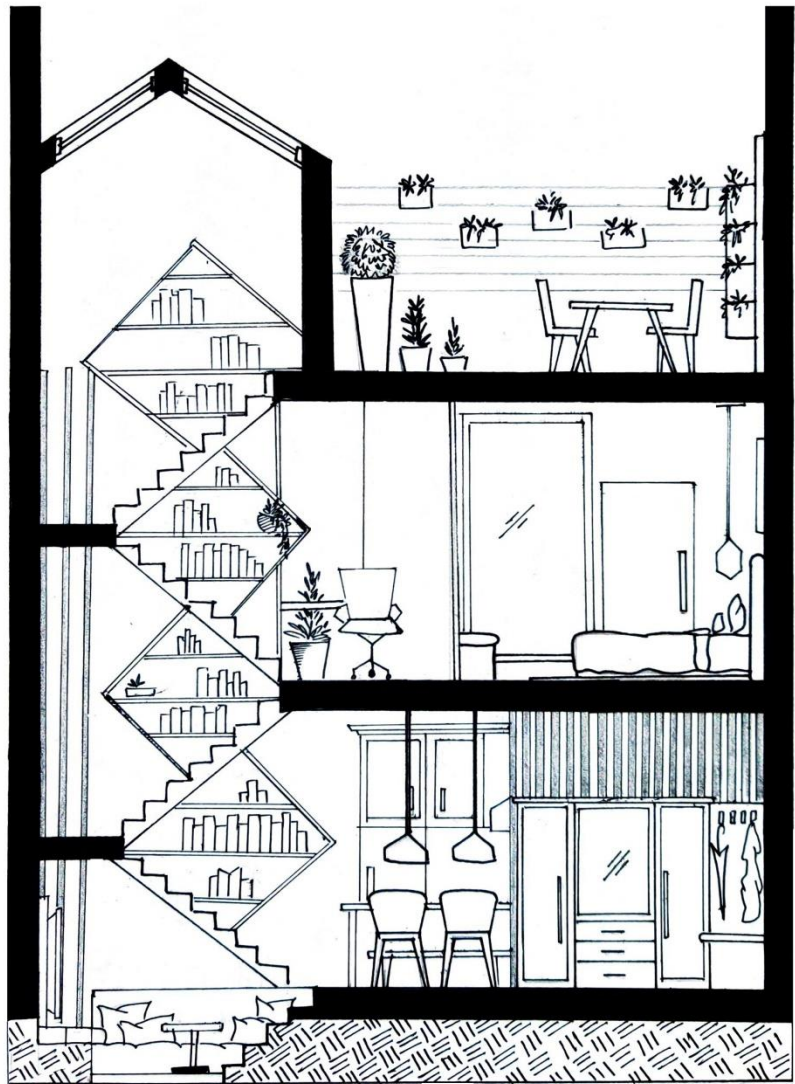
THIRD FLOOR PLAN

The Urban Loft

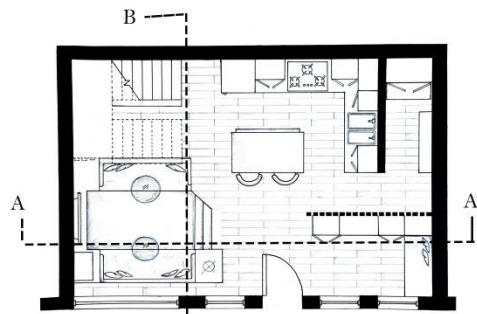
The residential design contrasts between open and closed spaces through vertical wooden louvres defining spatial boundaries yet adhering to the free floor plan. The sunken living room as well as the double ceiling height adjacent to the staircase enlarges the space. An abstract sculptural staircase with floor to ceiling built-in bookshelf creates a helical structure, enhancing the charisma of the space as well serve as a functional element for circulation.

MARY VIVIANA BALRAJ

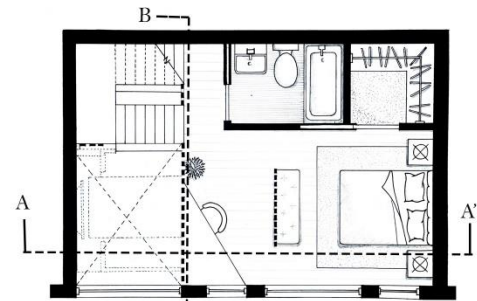




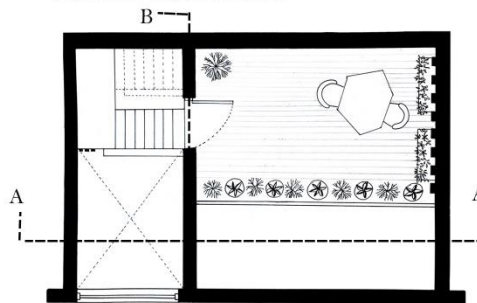
SECTION AA'



FIRST FLOOR PLAN



SECOND FLOOR PLAN



THIRD FLOOR PLAN



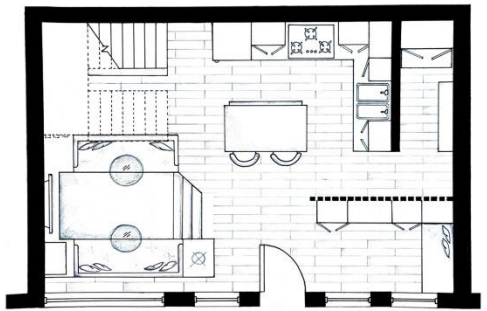
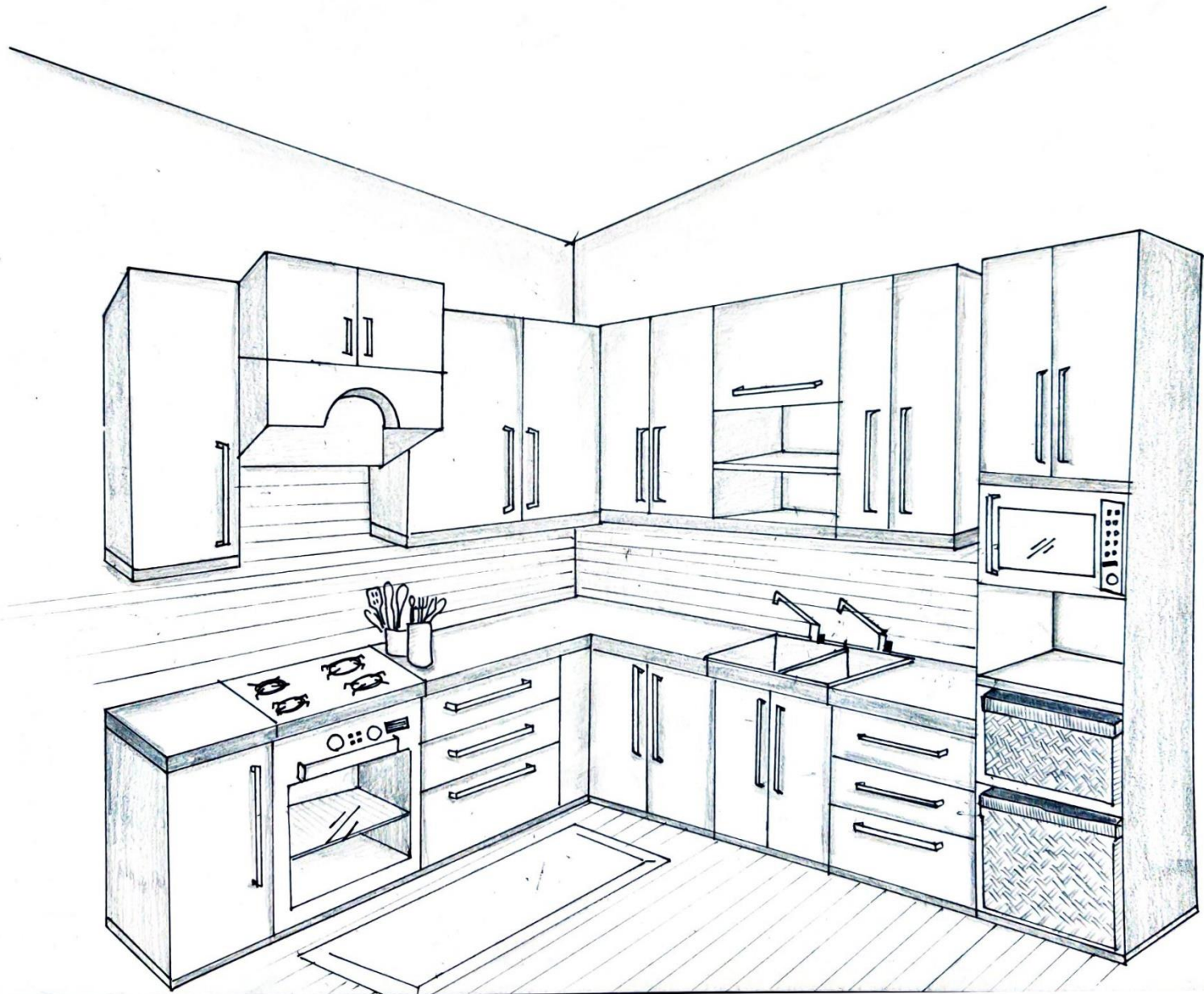
SECTION BB'

The Urban Loft

The residential design contrasts between open and closed spaces through vertical wooden louvres defining spatial boundaries yet adhering to the free floor plan. The sunken living room as well as the double ceiling height adjacent to the staircase enlarges the space. An abstract sculptural staircase with floor to ceiling built-in bookshelf creates a helical structure, enhancing the charisma of the space as well serve as a functional element for circulation.

MARY VIVIANA BALRAJ





PERSPECTIVE OF KITCHEN

The Urban Loft

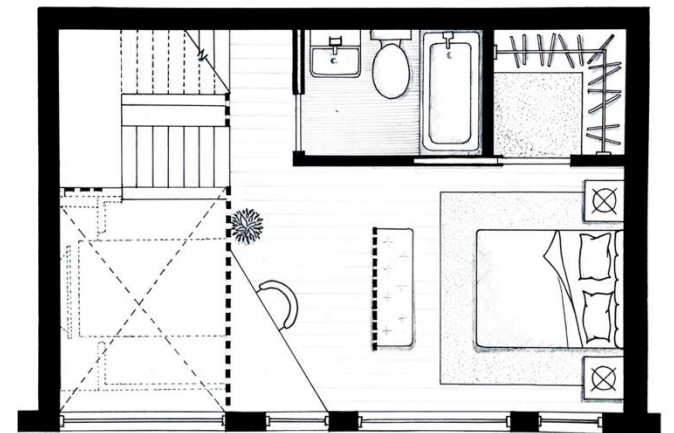
The residential design contrasts between open and closed spaces through vertical wooden louvres defining spatial boundaries yet adhering to the free floor plan. The sunken living room as well as the double ceiling height adjacent to the staircase enlarges the space. An abstract sculptural staircase with floor to ceiling built-in bookshelf creates a helical structure, enhancing the charisma of the space as well serve as a functional element for circulation.

MARY VIVIANA BALRAJ





PERSPECTIVE OF THE BEDROOM



The Urban Loft

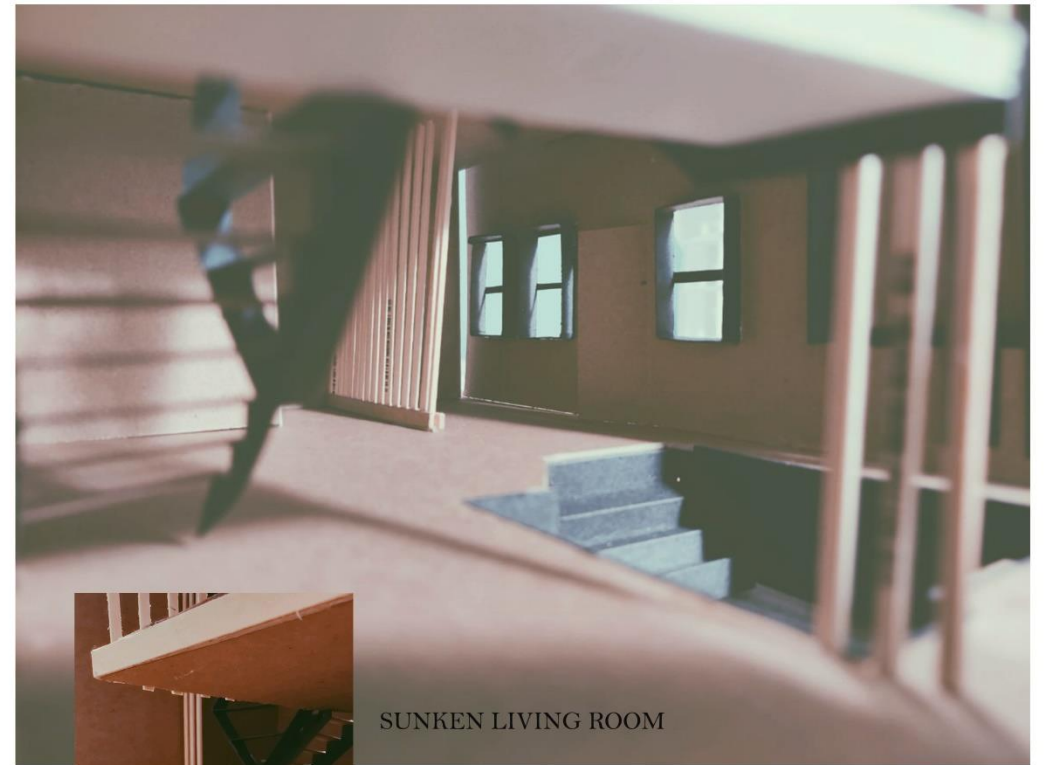
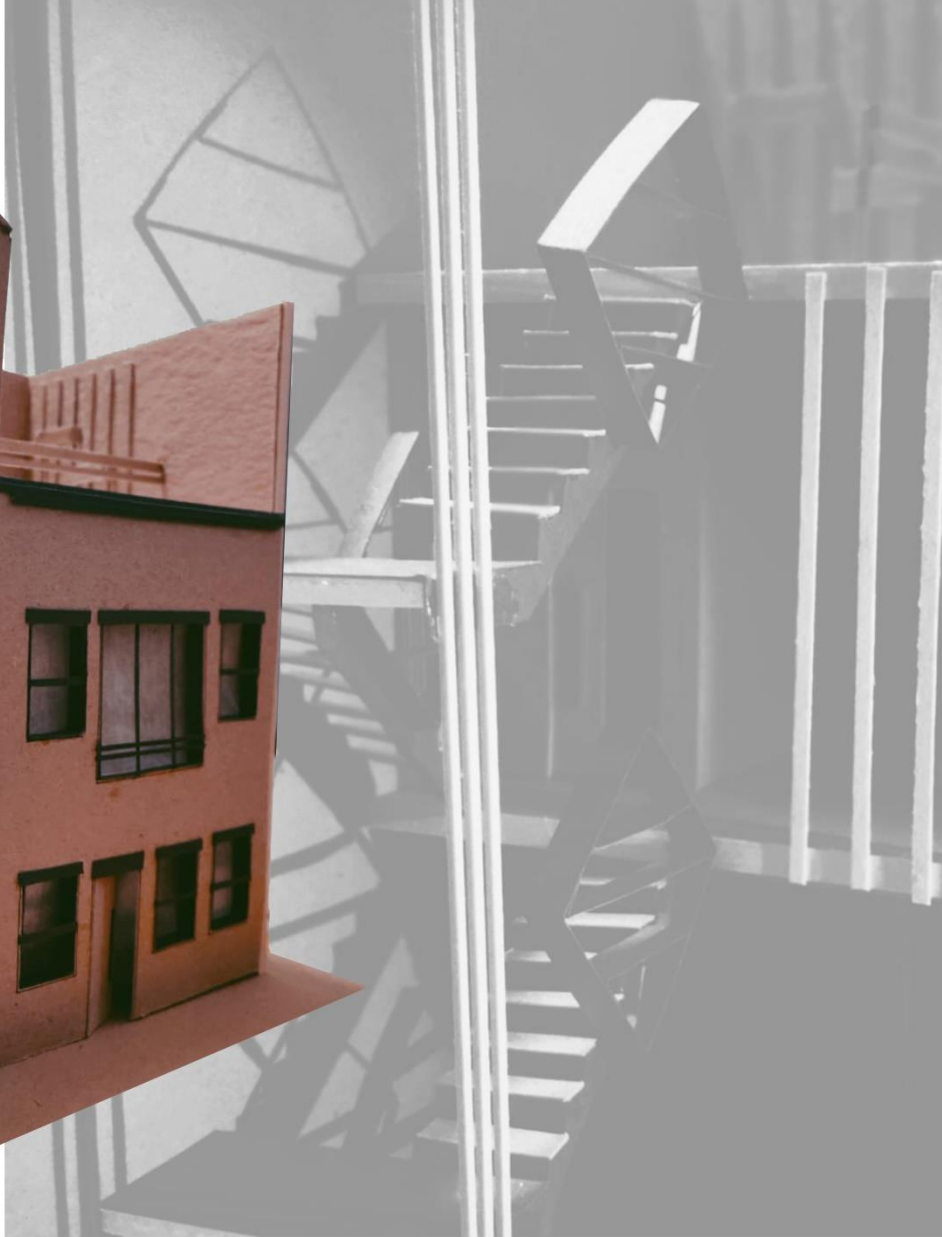
The residential design contrasts between open and closed spaces through vertical wooden louvres defining spatial boundaries yet adhering to the free floor plan. The sunken living room as well as the double ceiling height adjacent to the staircase enlarges the space. An abstract sculptural staircase with floor to ceiling built-in bookshelf creates a helical structure, enhancing the charisma of the space as well serve as a functional element for circulation.

MARY VIVIANA BALRAJ





FRONT ELEVATION



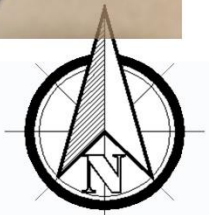
SUNKEN LIVING ROOM



The Urban Loft

The residential design contrasts between open and closed spaces through vertical wooden louvres defining spatial boundaries yet adhering to the free floor plan. The sunken living room as well as the double ceiling height adjacent to the staircase enlarges the space. An abstract sculptural staircase with floor to ceiling built-in bookshelf creates a helical structure, enhancing the charisma of the space as well serve as a functional element for circulation.

MARY VIVIANA BALRAJ





The Urban Loft

The residential design contrasts between open and closed spaces through vertical wooden louvres defining spatial boundaries yet adhering to the free floor plan. The sunken living room as well as the double ceiling height adjacent to the staircase enlarges the space. An abstract sculptural staircase with floor to ceiling built-in bookshelf creates a helical structure, enhancing the charisma of the space as well serve as a functional element for circulation.

MARY VIVIANA BALRAJ





SCULPTURAL HELICAL STAIRCASE



The Urban Loft

The residential design contrasts between open and closed spaces through vertical wooden louvers defining spatial boundaries yet adhering to the free floor plan. The sunken living room as well as the double ceiling height adjacent to the staircase enlarges the space. An abstract sculptural staircase with floor to ceiling built-in bookshelf creates a helical structure, enhancing the charisma of the space as well serve as a functional element for circulation.

MARY VIVIANA BALRAJ





Thank You.

MARY VIVIANA BALRAJ