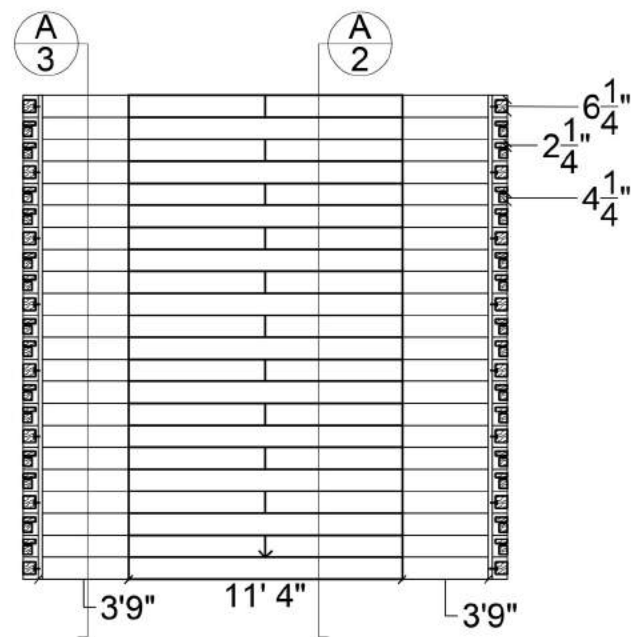


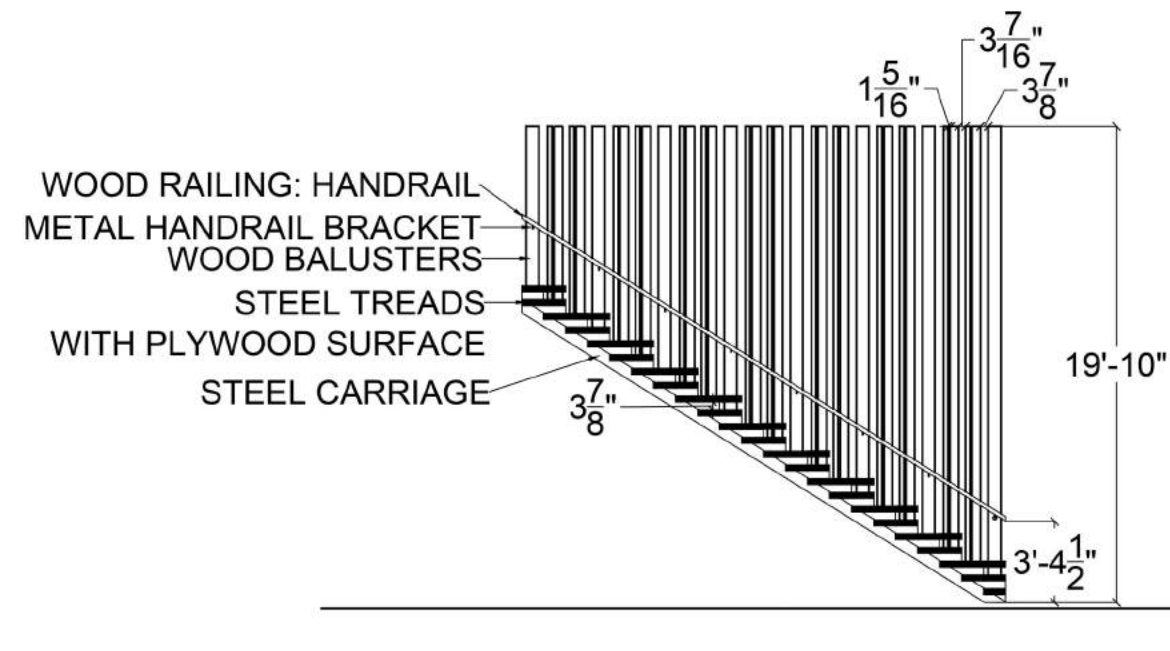
PERELMAN CENTER FOR JEWISH LIFE AT DREXEL
CENTRAL STAIRS

DETAILING DRAWINGS OF THE CELEBRATED STAIRS OF PERELMAN CENTER FOR JEWISH LIFE AT DREXEL

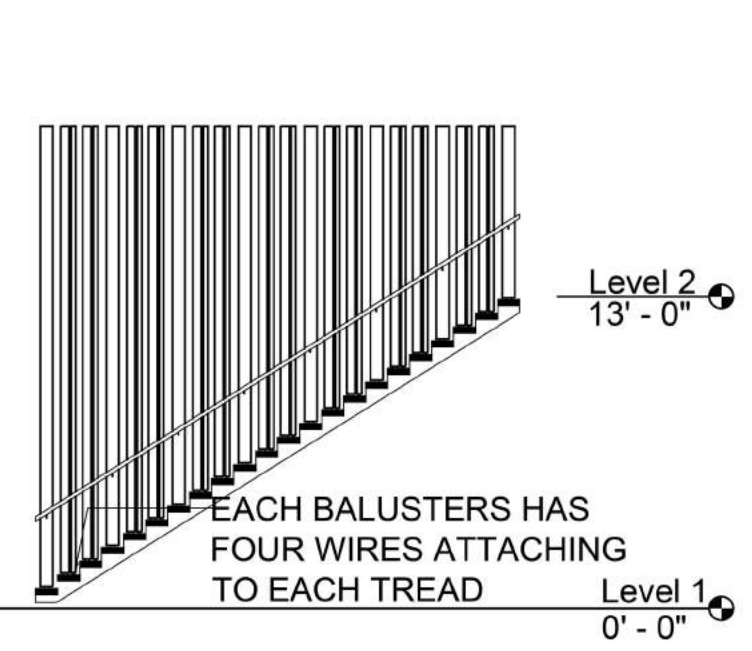
TIANCHENG YANG | WINTER 2017 | INTR 743 | WILLIAM MANGOLD



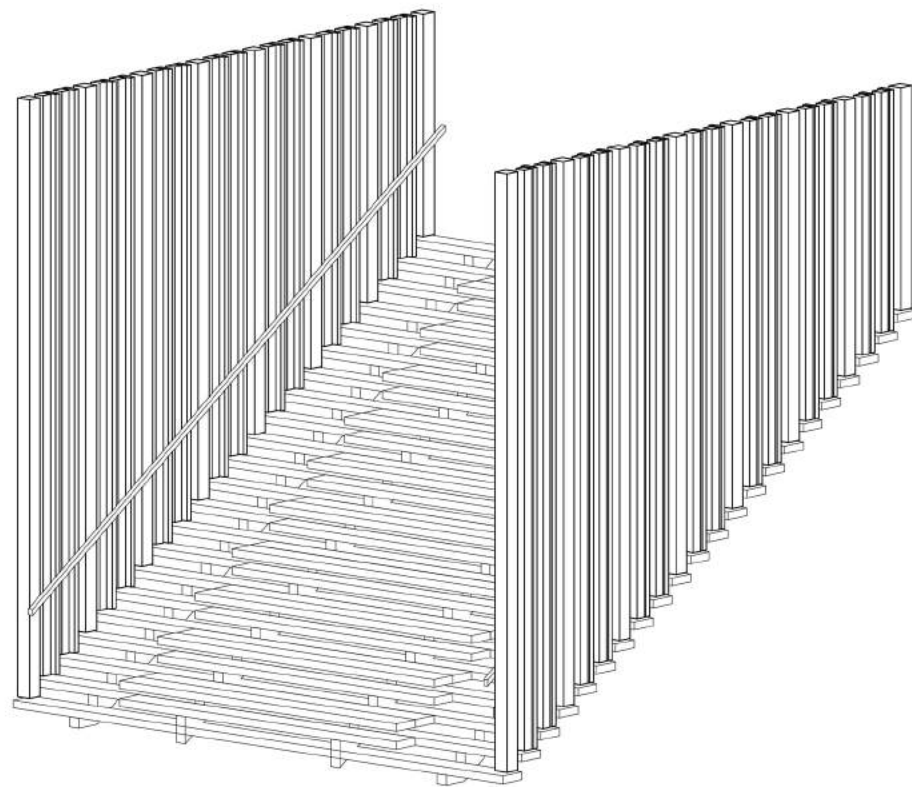
A 1 FLOOR PLAN
SCALE: 1/8" = 1' - 0"



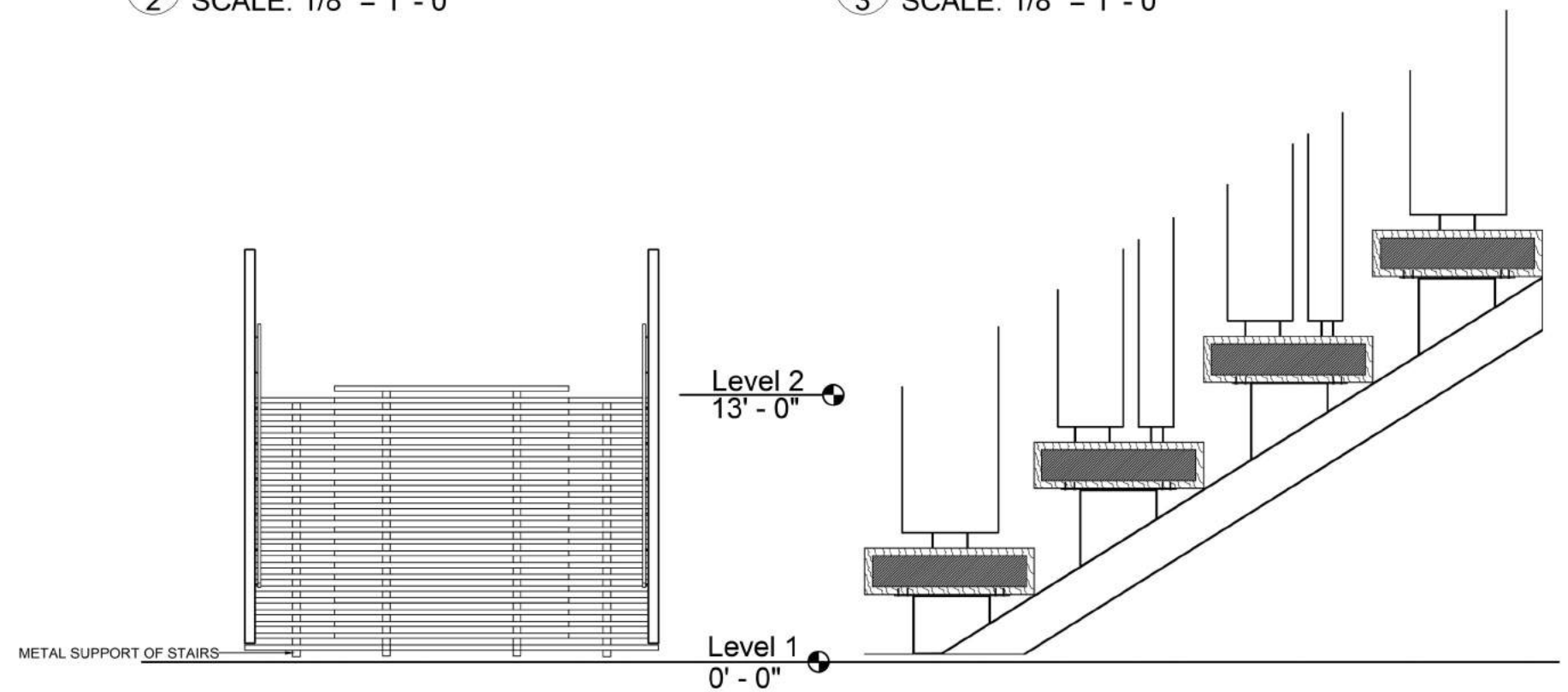
A 2 EAST SECTION
SCALE: 1/8" = 1' - 0"



A 3 WEST SECTION
SCALE: 1/8" = 1' - 0"



A 6 3D VIEW



A 4 SOUTH ELEVATION
SCALE: 1/8" = 1' - 0"

A 5 STAIR DETAIL
SCALE: 1 1/2" = 1' - 0"

INTERPRETATION OF THE DETAIL COMPONENT

TIANCHENG YANG | WINTER 2017 | INTR 743 | WILLIAM MANGOLD

The stairs of Perelman Center is a typical straight stair. Even though it is the simplest stair system, it's convenient and functional. People could go up and down directly from both left and right sides.

One thing that draws people's attention is that in the center, for every two stairs, there is an extra tread on top of a stair that creates a small platform, which could be an either walking or seating area. Therefore, it makes these stairs multifunctional.

Another interesting point about this staircase is that it can also be classified as the floating stairs. As you can see, the left bottom picture shows only metal frames that support the stairs. There are advantages of having open-riser stairs. On the one hand, these stairs allow the light to pass through, which enhances the lighting of the space. On the other hand, open-riser stairs increase the transparency complements open floor plan. The space beneath can be used for many purposes. Last but not least, as the design of the stairs was inspired by a Menorah and the idea was transferred to a modern look, open-riser staircases offer a brightness and modern appeal.

