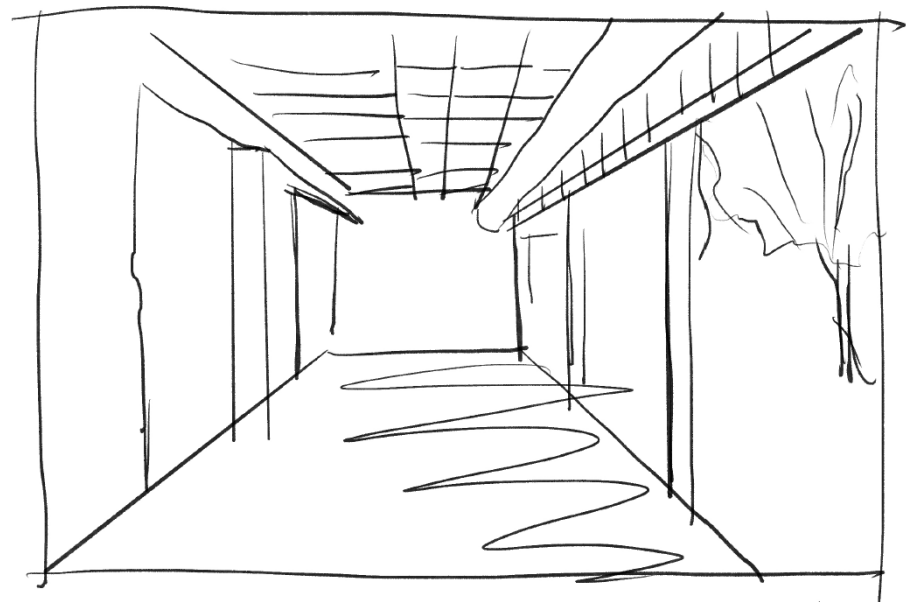




into one.
ahyoung song



THE FISHTOWN CULTURAL COMMUNITY CENTER

ahyoung song

interior design graduate thesis

advisor / annie kwon

Drexel University 2021

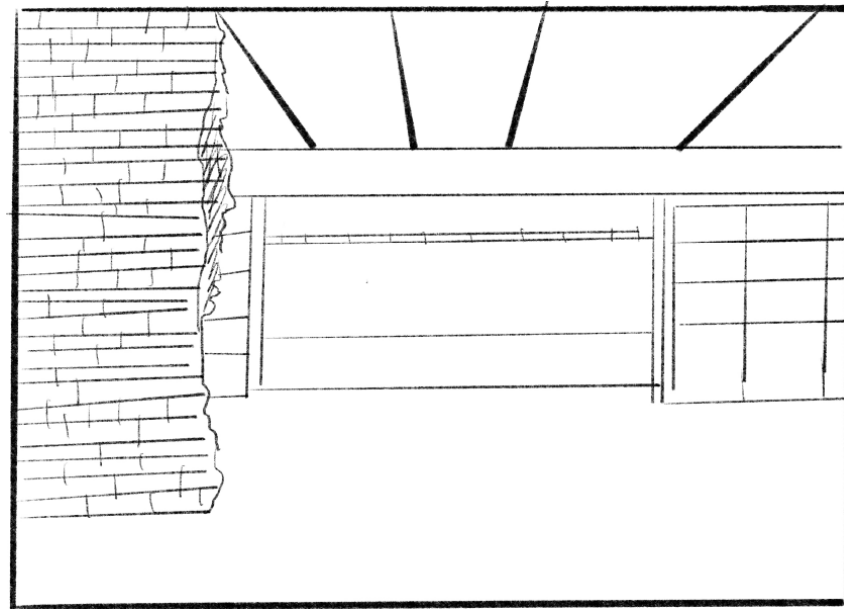


table of contents.

1	introduction literature review &precedents	10 18
2	research cultural transition & site &programming	23 46
3	brainstorming + process visual design intention &sketches	50 56
4	the design	68



“

I expected the new life in United States would be flourishing with wealth and advanced technology that no other countries possessed other than United States.

/Jung Manton (35)

”

“

Even though I had knowledge of the United States, when faced with the reality, it was a completely different experience than what I had anticipated. I did not expect to feel isolated and unsure about my identity, but, I had friends and family who helped me to define who I am and how I can overcome challenges.

/Yong Song (23)

”



1 introduction

literature review
& precedents

More people emigrate to the United State than any other country in the world, making it their new shelter and new hometown. I am one of them, and I would have been lost without the support I received. I experienced so many new things, mentally and emotionally as a foreigner, as I started my new life in the United States. Some of these things included a language barrier, cultural differences, and homesickness. I also felt sometimes isolated from having a different culture. Nevertheless, I had my friends and family who defined my culture and made me feel proud.

Fortunately, I gained so much positive energy and positive thoughts from conversations with friends who had the same experiences as me. There were several places where I was able to find new people and support such as church, Korean Student community groups, ESL class. These places led me into a new culture smoothly. For instance, I went to church with American born Koreans and Koreans are just like me. So, I had a chance to get along with those people who are partially in the same situation. It was pleasant to share and listen to the stories. We shared stories of Korean immigrants and what they have overcome and achieved in a new country. It helped me to understand and get through the hardships.

My aim is to create a welcome center to provide comfort and relaxation as well as give immigrants to build a new social network in the new country. Additionally, it will give a sense of belonging to foreigners as they take part in and blend into American Society.

Welcome Center for Immigrants

Introduction: Experiences of Immigration

More people emigrate to the United States than any other country in the world, making it their new shelter, and new hometown. Jennifer E. Lansford states that the United States continues to live up to its historical reputation as “a nation of immigrants”, a country of immigrating and acculturating people, with the countries of origin and the numbers of its naturalizing citizens. I am an immigrant to the United States. I would have been lost without the support I received from my family and friends. When I started my new life in the United States as a foreigner, I went through many new experiences, emotionally and mentally. It was a challenge for me to put my original culture aside and start learning a new one, and I am still in the process of adapting. But I can say that I have learned valuable lessons and experiences thus far. Some of the challenges include a language barrier, cultural differences, and homesickness.

It is also important to note that moving from where one has lived for a long time to a new place of residence, can have destabilizing effects upon the mind.² The depth and effects of the trauma depends on the age of the person when immigration occurred.

Also, the depth of ones feelings for their homeland, anticipation of changes, and the capability to tolerate separation affect one’s mental state. Even though I had knowledge of the United States, when faced with the reality, it was a completely different experience than what I had anticipated. I did not expect to feel isolated and unsure about my identity, but, I had friends and family who helped me to define who I am and how I can overcome challenges. Most importantly, it was my choice to come to the United States to participate in the opportunities it provided, therefore, I must continue to find ways to endure wisely. I do this through my support system and remaining open to new experiences and ideas.

Through research, this literature review will discuss how people transition to a new culture, as well as the problems they face. Through precedent analysis, I will illuminate how the architectural form of openness, engages people to interact with public space in unfamiliar surroundings. This thesis project aims to provide a welcome center for immigrants that will help them feel closer to their new country without losing ties to their homeland. Using openness as an architectural narrative, a welcome center can bring a strong sense of

support and comfort to an immigrant when they enter a space that is designed for them.

Culture in Transition

Many immigrants today build their own social networks that cross geographic, cultural, and political borders. In the article titled *Introducing Intercultural Communication*, Basch, Schiller and Blanc (1994) used the concept called transnationalism to refer to those people who “sustain multi-stranded social relations that link together their societies of origin and settlement”. It is important to sustain one’s original roots while at the same time working towards acculturation. It is not easy to move to a new culture, however, once immigrants are in a new country, it is their responsibility to form a balance between their original culture and the new one. As authors Liu, Colcic , and Gallois state, immigrants often make their own social networks and connections with people. They accepted where they came from as well as their new lifestyle in the United States.³

In her case study on the experience of migration and acculturation of international students, Camilleri conducted the activities and interviews with several international students to understand their experiences of migration and acculturation. The data analysis resulted in the identification of five composite essential structures:

- (a) remaining strongly rooted in family, values, and culture of origin, while branching out and adapting to a new culture;

- (b) sacrificing comfort and protection to explore, discover, achieve, and gain independence;
- (c) coping with transition and distance from family through social supports and new experiences;
- (d) integrating diverse personality traits and experiences into one piece of artwork; and
- (e) finding a voice through metaphors.

The author Daniel Miller who wrote *Migration, Material Culture and Tragedy*, discusses Marcia, a migrant who straddled two different cultures and social ideals, and struggled to find her place in either country. Marcia is from the Caribbean but immigrated to London. In her effort to establish the home for herself, she decorated her house with pieces that resembles the styles of the West Indies, along with her understanding of interior styles of the English. However, it only gratified only the intellectual aspect of her new movement, but the emotional settlement. The story of Marcia shows us that migrants lose a part of their original identity by moving to another country, and struggle to settle physically and psychologically.

Psychology and Well-being in Cultural Transition

All immigrants will have different issues in their new culture depending on their circumstances. For example, if a parent, they will have to suffer to protect and feed their family along with providing for

their children’s education.⁶ They may also have limited employment options due to their visa status and language barrier.⁶ If it is a child that has immigrated, they will have to be educated in a new environment and contribute to helping their family as well.⁷ Research indicates that immigrants often have psychological issues while they are adapting to a new culture.⁶ Specifically, the effects of parenting stress affect mental health. Immigrant parents likely experience greater stress and emotional problems compared to immigrants without children. To a child, assisting their parents is often an important feature of immigrant family life. There is burgeoning interest in their new roles and responsibilities in a new culture. Children’s family responsibilities evolve out of a larger set of changes to family life resulting from migration and settlement. Immigrant children contribute to family businesses, they help parents with communication, all while focusing on schoolwork. These heightened responsibilities can help mitigate the stress many parents are feeling. Scholarly research shows that people with low stress levels bring more competence to their work environment, and people with high stress levels often suffer health problems.⁶ Research indicates that immigration related stress potentially correlates with adverse health outcomes. The first generation of immigrants’ acculturative stress increased the risk of depression. This is when support from friends, children and other family members play an important role in immigrant life.

The Scholar Afra Ahmed Hersi shares a story of an Ethiopian immigrant high school student. The student Warkana received support from his family,

friends, and school. This emotional support provided him a sense of caring and connection. It motivated him to engage as he encountered academic and social challenges. The author demonstrates the importance of support in an immigrant’s life. Most immigrants often feel isolated because they are not assimilated into the new culture yet. However, if they have a place to gather as immigrants, to share their similar issues and have chance to listen to others’ stories, it will help them to absorb the new culture. The author of Ripe idea, Amy Van Den Berg explains a story of Michelle Castillo. She and her family arrived in the Edmonton Suburb of Belvedere. She started hanging three immense bunches of a banana like, starchy fruit from the ceiling of the brand-New Belvedere Transit Centre. She said, “I grew up with these images and I think as immigrants, food is always in our heads when you think of home.” She mentions that it goes deeper than a comforting flavor. All immigrants have a longing for their country no matter how long they have been outside of it. There are clear connections between them. There are objects that remind them of their culture, country, and identity.¹⁰ Thus, the need for Welcome Center for Immigrants, where immigrants can share cultures, emotions, and supports for each other, is manifested through their expression of longing for connections: “Two of the main tasks you could imagine being important to a group of people with mixed cultural backgrounds are affiliation, creating and maintaining social bonds, and reward — telling people what’s good and what’s bad.”

Places that support cultural transition – Precedents and Personal Experience

Het Anker Centre is the community center that was designed by Modersheim Moonen in Netherland. To serve a large and diverse group of users who are looking to make connections, the building embraces the feeling of openness through its various characteristics. The difference in the level of ground defines the size and the intention of spaces. For instance, the space with a lower level of ground is greater in its size than the space with a higher level of ground, thus allow its users to explore and communicate. On the other side, the smaller space provides users with the room with a designated intention, such as a small gathering. The use of glass for the exterior complements the use of various ground level in conveying different atmosphere throughout the building by allowing users to fully embrace the space that is open to them via unblocked view.

Aaniin Community Centre is another example of a community center that employs inclusivity and openness. The center is built in Markham, which is one of the diverse cities with 58% of its residents as immigrants in Canada. The center consists of spaces that are designed for various activities and interactions, such as open kitchen, co-working studios, etc. Thus, providing its users with ways to get involved within the community. Similar

to Het Anker Centre, Aaniin Community Centre also utilizes the vastness of its space to convey the feeling of openness with a high-ceiling roof. However, it even pushes the feeling of openness through how it divides spaces within the building. Most of spaces in the building is visible from the outside through a glass wall or is even wall-less. For example, the fitness center on its second floor is completely open and visible from the stair, where people sit and rest, on the opposite side. Hence, people feel like they are all in one place.

Another precedent is Desert X AIUla Visitor Center in Saudi Arabia. This is not necessarily a place where people come to engage with others, but it succeeds to attract people to find a rest in the desert. A large opening in the ceiling further pushes the intention of the building that people visit not only for gaining information and resting, but also for access to the beauty of its surrounding landscape through the opening. In addition to the psychological impacts on the place and people who visits that the opening brings to the space, the Desert X AIUla Visitor Centre takes advantages of its openness to establish a unique character for itself and a surprise for its visitors.

Conclusion

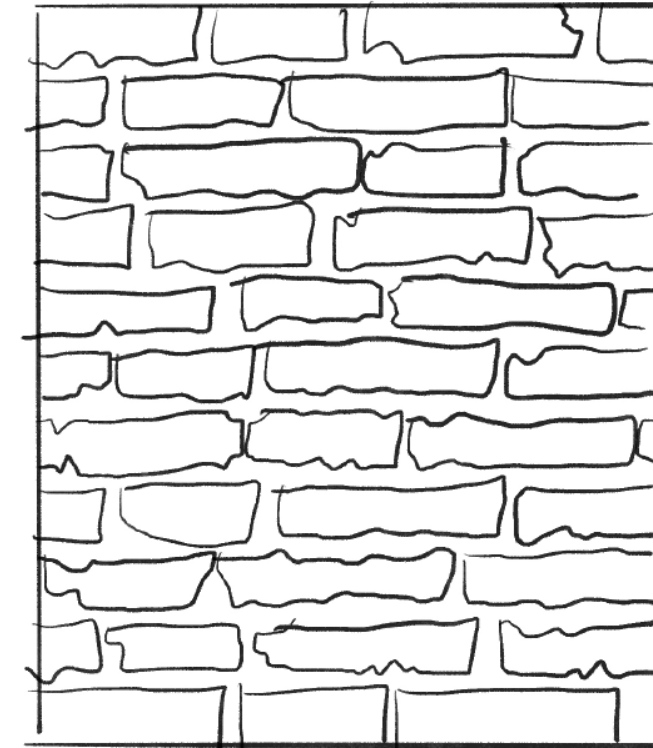
When I moved to the United States, I was fortunate to have family whom I could share my problems with and find comforts from. Also, as a student, I was easily able to join community groups from school and church to socialize with people who are in the similar situations as mine. These opportunities

were indeed essential in shaping my transition to the new culture and environments and as discussed above, will be essential to many immigrants who are going through the same transition. Hence, a welcome center for immigrants should become an open place where immigrants, regardless of their age and origins, can freely come to accomplish their new root in the new country. And the center can help this in various ways. First, the center will welcome you both visually and psychologically. As the precedents demonstrated, the visual cues of openness in its architectural design will easily allow people to discover and visit with comfort. As Aaniin Community Centre designed its space for various interactions, the welcome center will also provide spaces for interactions among immigrants to share their cultures and make connections. Since the center is intended for all demographics and origins, the diversity in the activities that the center provides will help weaken the barriers in age, languages, etc. and strengthen the bond that people accomplish within the center.

As the United States continues to be the nation with the largest number of immigrants, immigration issues cannot be avoided. These issues are not just the matter of feeling lost but are the matter of living and protecting their families. Thus, the welcome center will become their first home in the new culture where they can grow from and eventually settle on their own.

Bibliography

- 1 Lansford, Jennifer E., Immigrant Families in Contemporary Society, October 28,2020
- 2 Salaman Akthar, THE TRAUMA OF GEORGRAPHIC DISLOCATION, December 2, 2010
- 3 Shuang Liu, Zala Colcic, and Cindy Gallois, Immigration and Cultural Diversity page 216
- 4 Marya Frieda Camilleri, Acculturation and Identity, page 12
- 5 Daniel Miller, Migration, Material Culture and Tragedy 17
- 6 Browne, Dillon T; Kumar, Aarti; Puente-Duran, Sofia; Georgiades, Katholiki; Leckie, George; et al.
- 7 Katz, Vikki S. Chapter 1 Children, Family, and Community page 3
- 8 Covington-Ward, Y., Agbemenu, K., & Matambanadzo, A. (2018). "We feel like it was better back home:"
- 9 Ahmed,Afra Transnational immigration and education: A case study of an Ethiopian Immigrant High School student
- 10 Amy Van Den Berg, Ripe idea: A sculpture about home, diaspora, immigration, and comfort food
- 11 NewsRx Health & Science, Deep national history of immigration predicts wide cultural comfort displaying emotion
- 12 Het Anker Community Center in Netherland
- 13 Aaniin Community Centre and Library <https://perkinswill.com/project/aaniin-community-centre-and-library/>



Desert X AlUla Visitor Centre



The First one is Desert X AlUla Visitor Center in Saudi Arabia. This place provides a place for people to come and find a rest in the middle of the desert. The place successfully welcomes its visitors to rest and enjoy the beauty of its surrounding through a large opening in the ceiling that embraces serene nature of the desert. In addition to the psychological impacts that the space brings to its visitors. The Desert X AlUla Visitor Centre takes advantages of its openness to establish a unique character for itself and a surprise for its visitors.

Aaniin Community Centre



Aaniin Community Centre is another example of a community center that employs inclusivity and openness. The center is built in Markham, which is one of the diverse cities with 58% of its residents as immigrants in Canada. The center consists of spaces that are designed for various activities and interactions, such as open kitchen, co-working studios, etc. Thus, providing its users with ways to get involved within the community. Similar to Het Anker Centre, Aaniin Community Centre also utilizes the vastness of its space to convey the feeling of openness with a high-ceiling roof. However, it even pushes the feeling of openness through how it divides spaces within the building. Most of spaces in the building is visible from the outside through a glass wall or is even wall-less. For example, the fitness center on its second floor is completely open and visible from the stair, where people sit and rest, on the opposite side. Hence, people feel like they are all in one place.

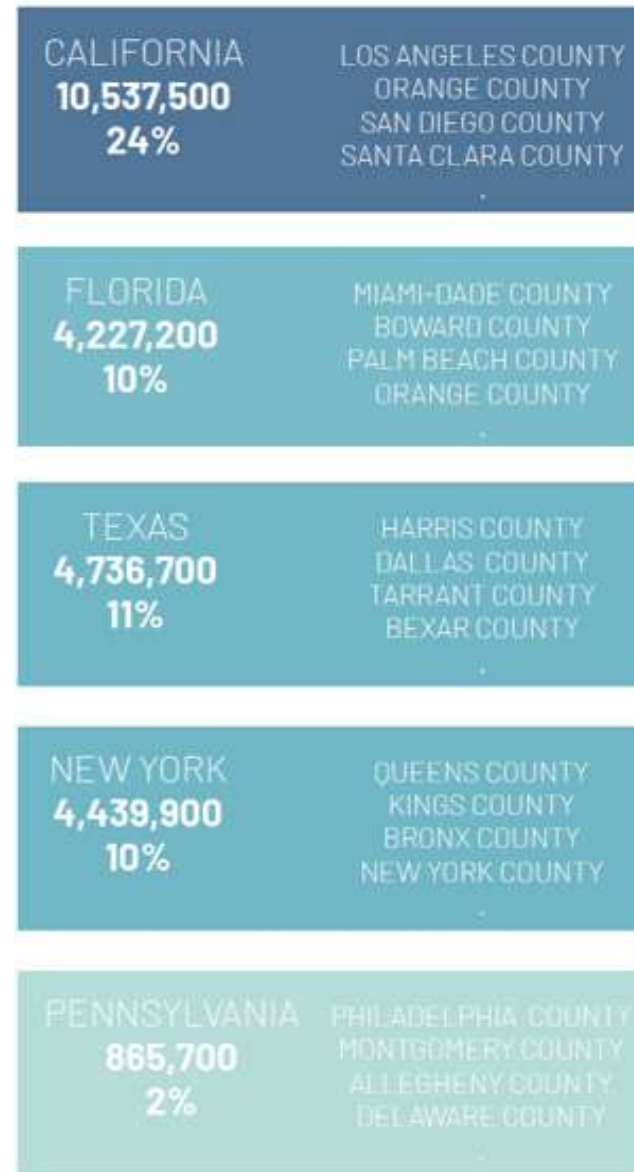
2

research

cultural transition & site
& programming

Total immigrant population
from all countries in the
United States

43,539,500



Philadelphia's Immigrants

:According to the PEW website, the immigrant population has grown rapidly starting in the 1970s.

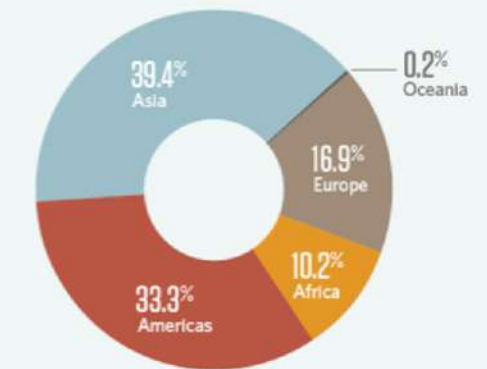
2000		2016	
Vietnam	11,500	China	22,100
China	10,400	Vietnam	13,700
Ukraine	8,300	Dominican Republic	13,200
India	7,600	India	11,900
Jamaica	7,000	Haiti	8,800
Italy	6,100	Mexico	8,100
Russia	5,300	Jamaica	7,900
Korea	5,200	Ukraine	6,900

Asia and the Americas were the leading regions of origin for Philadelphia immigrants in the most recent data, a shift from 2000.

Note: Numbers for 2016 represent the annual average for the 2012-16 period. All figures are rounded to the nearest hundred.

Source: U.S. Census Bureau, decennial census and American Community Survey, five-year estimates, 2012-16
© 2018 The Pew Charitable Trusts

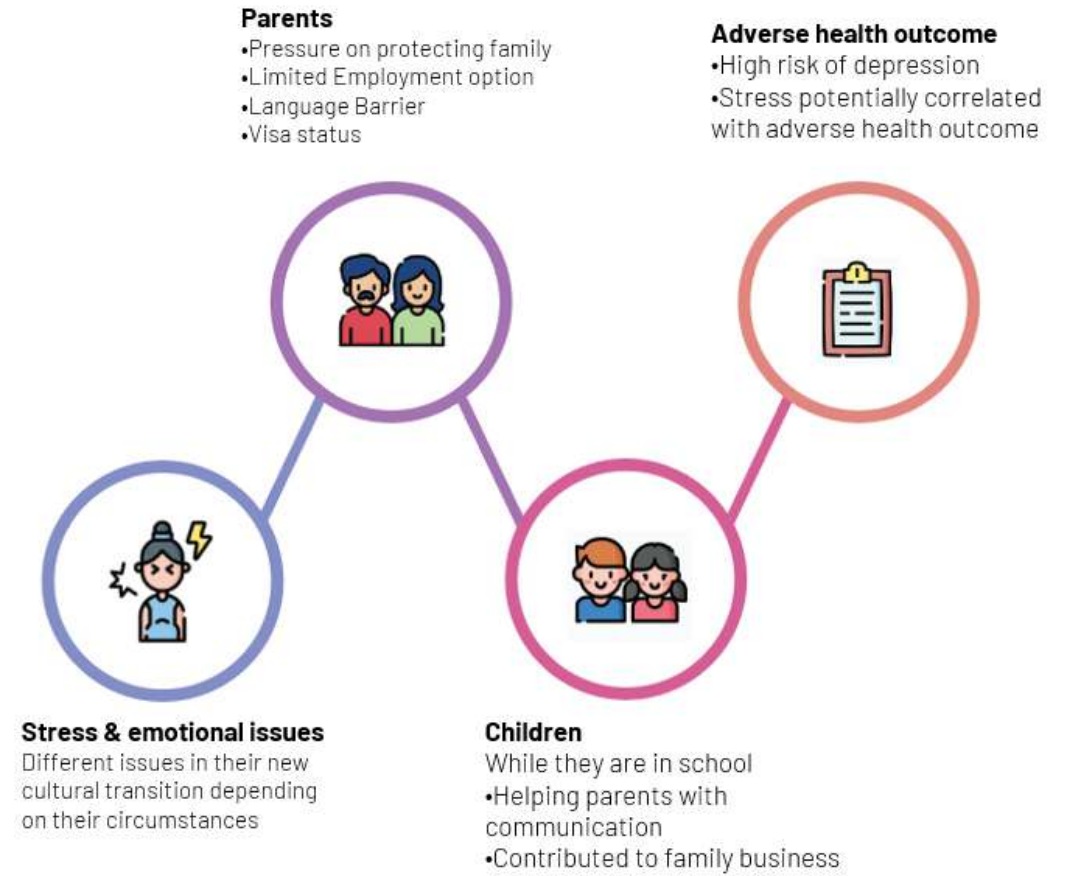
Figure 5
Shares of Immigrants in
Philadelphia by Continent
of Origin, 2012-16



Note: Shares represent the annual average for the 2012-16 period. The Americas comprise the Caribbean, Central and South America, Mexico, and Canada.

Source: U.S. Census Bureau, American Community Survey, five-year estimates, 2012-16
© 2018 The Pew Charitable Trusts

Psychology of immigrants



Immigrant interview

Interviewee: Justin Manton (age: 35)

Date: 01/06/21

The Journey

1. What were your hopes for your new life in new country? I expected the new life in United States would be flourishing with wealth and advanced technology that no other countries possessed other than United States.
2. What was the most difficult part about leaving? Because my country was not a multi-cultural society, it was difficult to imagine leaving from my culture that I am used to for my lifetime.
3. What was your journey to this new country or community like? I traveled through airplane flight which took about 14 hours long.
4. What was it like when you first arrived? I arrived in November and I remember as it was a cold day and a typical airport that I have seen in American movies.
5. What most surprised you? I always thought that the image of Americans would be tall but I was astonished that not all Americans were tall as I imagined.
6. What did you miss most about the country you came from? I missed food mostly. The food in my country was way different than American food so I had a difficult time eating for a while.
7. Who was most helpful with getting settled? My family in America was mostly helpful for me to settle down in United States successfully.
8. Migration can be hard, where did you find strength in difficult times? I always remembered who I am and where I came from. I believed that my innate strength would be more than enough to persevere any difficulties.
9. How do you think that migration has changed you? I became culturally different person. When I went back to my country after some years in United States, I found myself culturally different than the people in my country.

Hopes & Realities

1. As time has passed, how does your experience compare to what you expected? It was difficult than I thought. It was difficult to learn the new language and culture than I expected.
2. What have been your biggest challenges? The language barrier was the biggest challenges that I faced.
3. What have been your greatest sources of joy? My greatest source of joy is knowing that I am achieving something better as the time goes by each day.
4. In what ways do you think migration has made you a stronger person? If I stayed in my country, I would have not known how vast the world is and there are many kinds of people around the world. Migration made me to acquire an ability how to understand all these differences among the people around the world.

Case Study

Name of interviewee and title/position

: Alan Panek, Pastor at The Korean Presbyterian Church of Trenton

Date of interview: 01/11/2021

Renting space for church and Korean community from others.

1. How would you describe your organizational culture?

: Korean church is Presbyterian church and American is reformation

2. What is the square footage of your facility and how many occupants does that accommodate?

: About 50,000 sq ft. 3 floors

3. How do departments interact? Are there any special adjacencies?

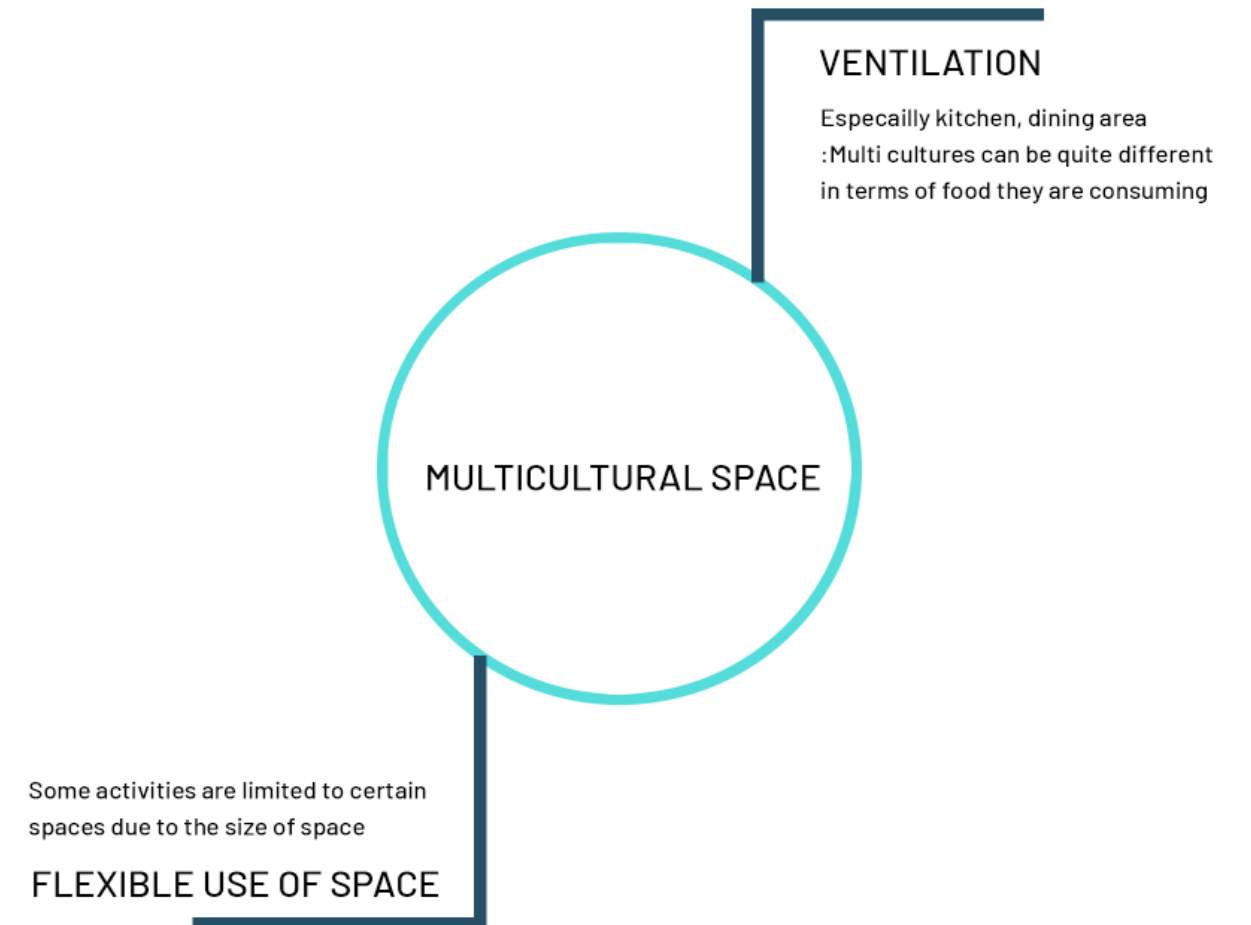
: Korean service, English service. They did not really interact besides social time after service. It was more like young people set up stuffs- only interacted with budget, special join services, social times after services.

4. Biggest facilitate challenges?

: Occasionally schedule arrangement, smell of foods

5. Are there any special equipment, plumbing, lighting, technology, or ventilation requirements?

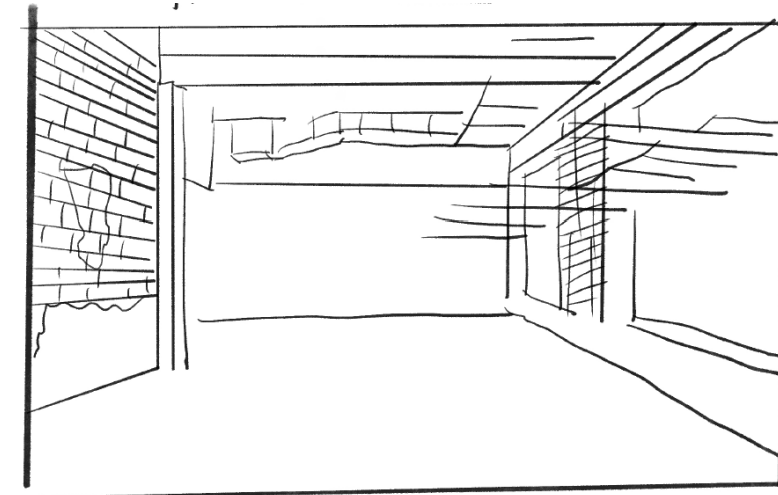
: They required additional ventilation system in the kitchen and social area for different types of food smells as well as windows.



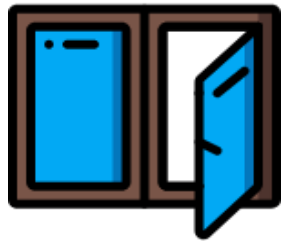
Design Intent

To give immigrants an opportunity to build a new social connections in which they can share their cultures and stories with; thus, alleviating their psychological burden

To help them assimilate into the American culture by encouraging them to learn and experience through various programs and events



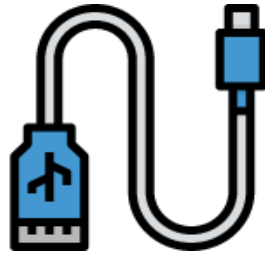
Design Principles



Openness



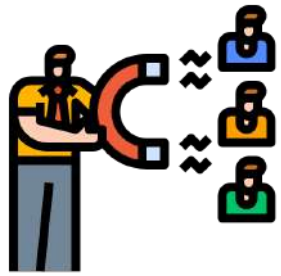
Transparency



Adaptability



Design Goal



Engagement



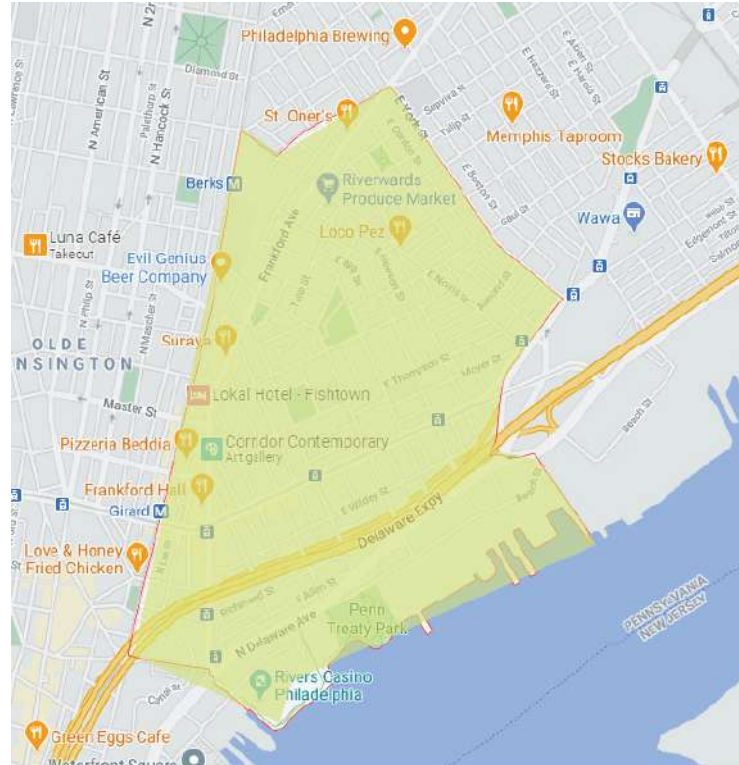
Value



Interaction



Site



Fishtown Background

Located immediately northwest of Center City, its borders are somewhat disputed today due to many factors, but are roughly defined by the triangle created by the Delaware River, Frankford Avenue, and York Street. It is embedded in rich culture of arts, culinary, and music. There are many small galleries and restaurants that people can enjoy casually.

Local Business in Neighborhood



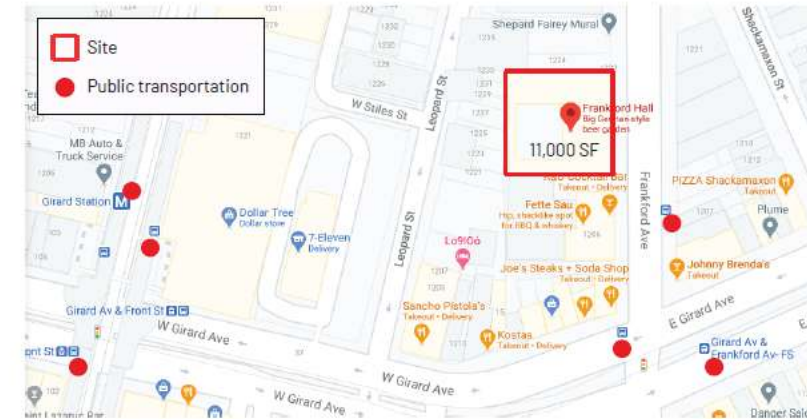
Dollar Tree
Dollar Store



Johnny Brenda's
Bar



Jinxed Fishtown
Antique Furniture Store



Site Requirements

- Accessible by public transportation
- Outdoor space
- Urban area
- Implies an openness in the space, such as high ceiling
- Neighborhood scale
- A high floating population



5 mins walk = 0.25 miles



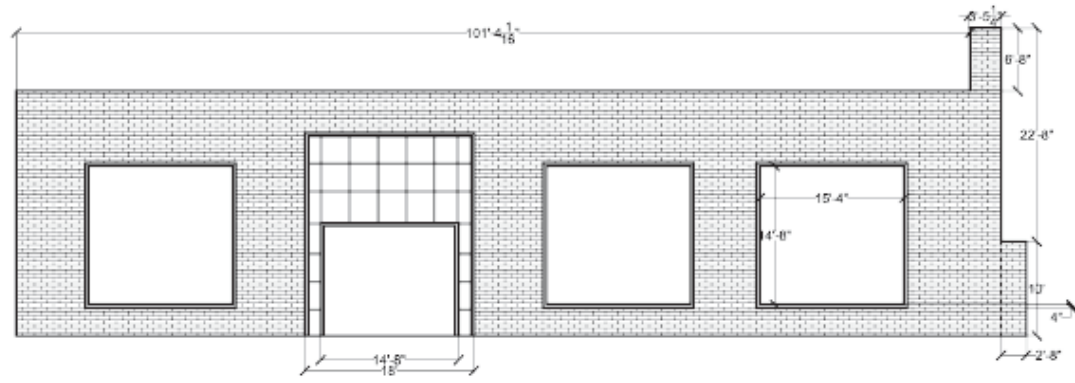
Art Machine Productions
Tatto Shop



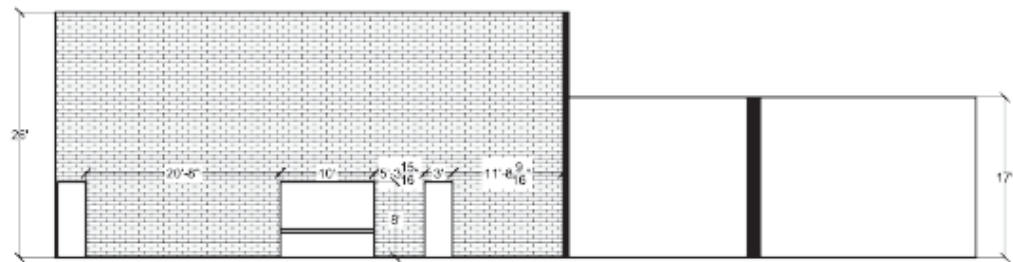
T-mobile
Cell Phone Store



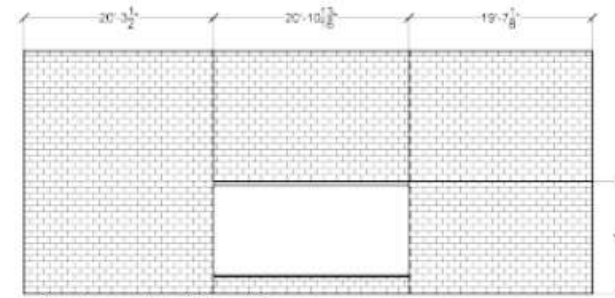
Corridor Contemporary
Art Gallery



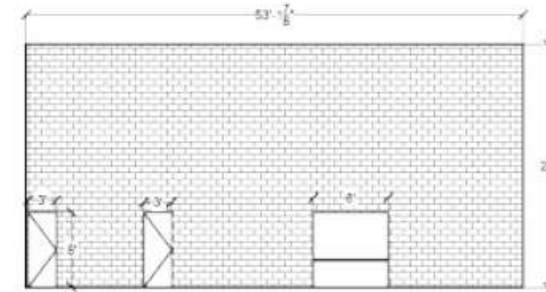
Main Entrance Exterior Elevation



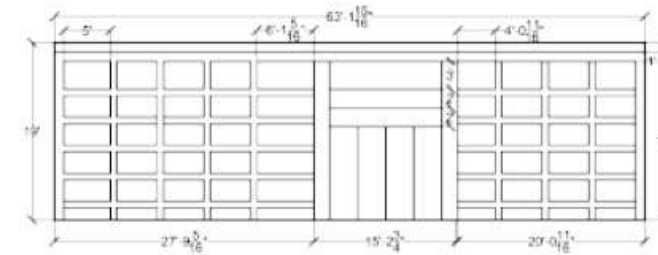
North Elevation



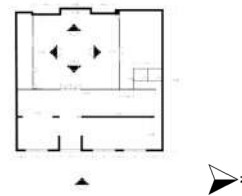
Courtyard West Elevation



Courtyard South Elevation



Courtyard East Elevation



SCALE: 1/16"=1'-0"



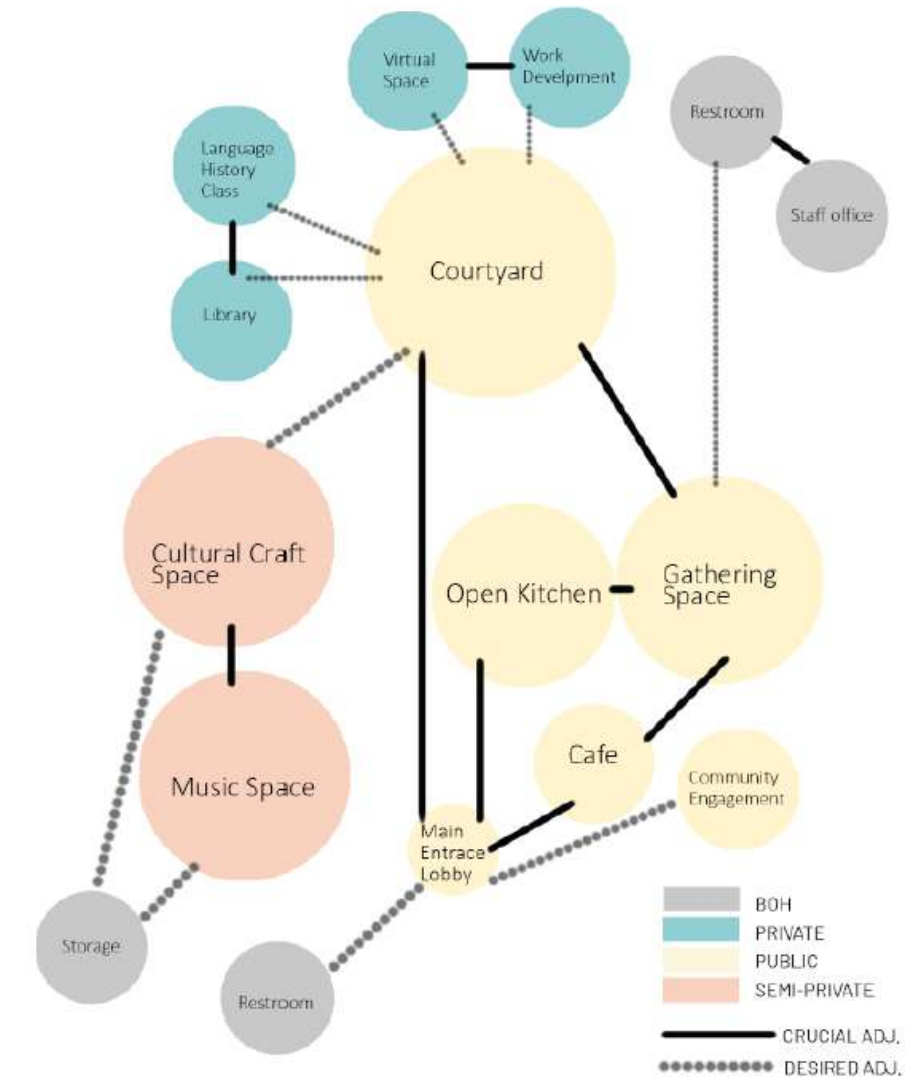
Frankford Hall

1210 Frankford Ave, Philadelphia, PA 19125

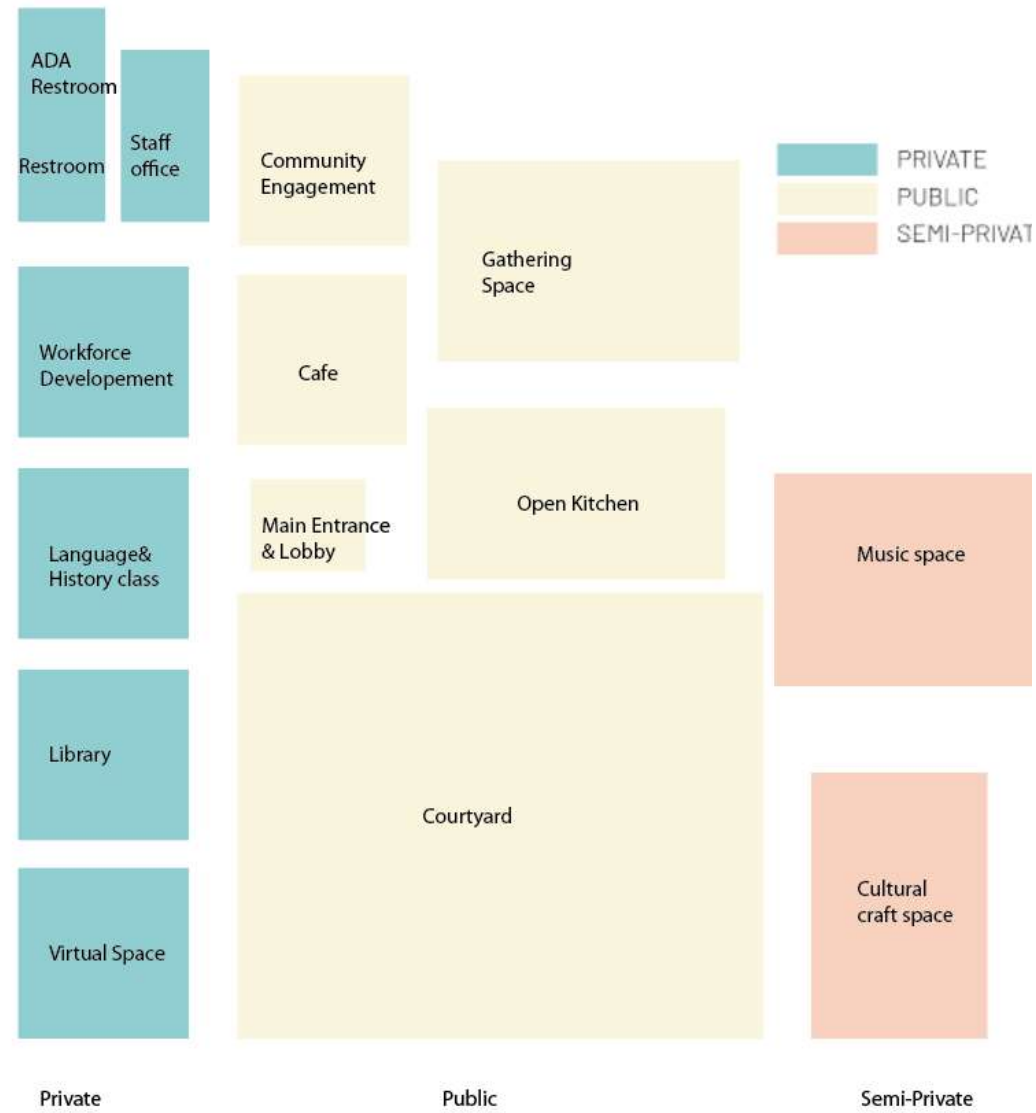
Program

Spaces	SF Estimated	Areas / Uses	Activities	Characteristics
classroom & Library	600	digitalLibrary + Language&History class	-Digital based Library -Teaching immigrants about American history / English	-High technologies: Large screen, sound equipment -Ipad and laptops are available to share digitized documents -Desk
Flex gathering	1000	Community engagement Open space	-Help/address community problem -Discuss how to bring good impacts to the immigrants in community -This is the main gathering place where people can build their social networks	-Located near the storefront to face the community -Casual meeting area -Windows -Dining tables (Low top / High top tables) -Needs to be near the open kitchen
Large class room	1000	Virtual +Workforce development	-Help immigrant to find the jobs (Provides job sources) -Teaching computer skills... etc. (Give them a chance to learn technical skills that helps to get a job) -Making international calls through larger screen	-Desk -Computer -Semi-private desk for a small group of people to have conversations -Conference table -High technologies: Large screen, sound equipment
Open Kitchen	800	commerical / community kitchen	-Making and sharing their cultural foods (cooking class) -Outreach (Prepare caring package, Free lunch...etc.) -Main public space along with gathering area	-Enough Storage -Large enough counter top for a small group of people to use / gather -Windows are required for ventilation -Space with kitchen equipment
Cafe	300	Cafe	-Public area ties into the courtyard	-Window -Small/Large seating area -Space with Kitchen Equipment (Plumbing system...etc.)
Workshop	500	Cultural Craft Space	-People can take a turn to decide what to make from which country -Making their own traditional craft and they can sell or display	-Desk -Display area -Storage
Event space	600	Music Space	-Playing instruments -Giving lectures on their own traditional music -Provide chance to present or playing their own cultural music	-Space to storage their instruments -Mini Stage to play -High technologies for professional speaker -Exhibition and performative space
Main Entrance / Lobby	120		-Place that gives first impression of the space	-High Ceiling, Connect to the courtyard -Close to the main public area: kitchen, cafe, gathering area
Staff Office	200		-Event staff, Maintance staff	-Private Space, desk...
Courtyard	3300	Flex uses	-Wedding -Party	-Lawn -The courtyard is the heart of the building -Main entrance and other public areas are tied into courtyard
Restroom	250		-6 Unisex Bathroom (2 ADA)	
Storage	300			
	8970			
Extra 20% for Circulation	1794			
Total Sq. ft	10764			

Program Adjacencies



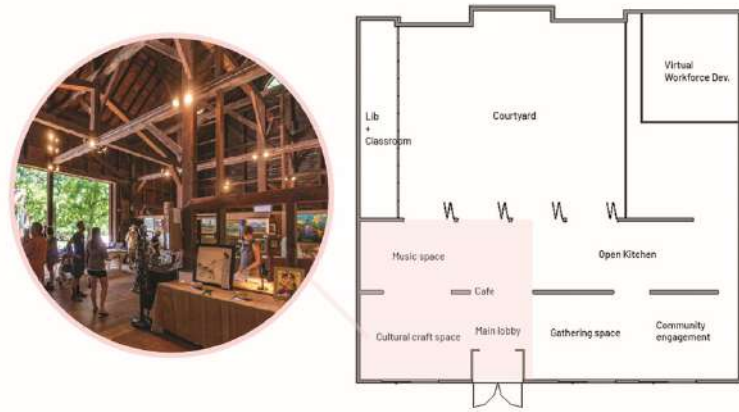
Total Program



3 brainstorming & process

sketches
& visual design intention

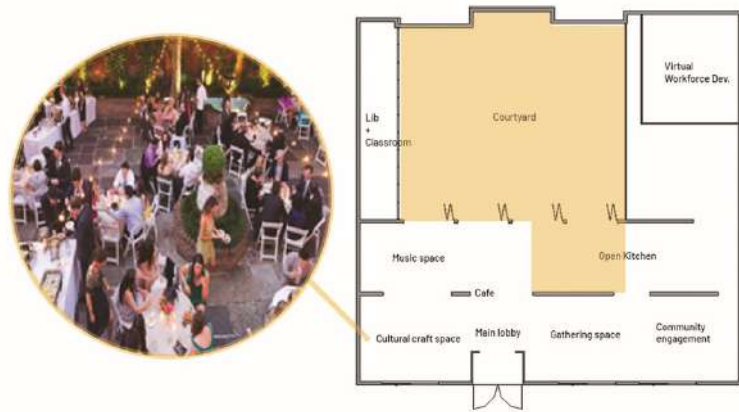
Space Planning



EXHIBITION AND PERFORMATIVE EVENT



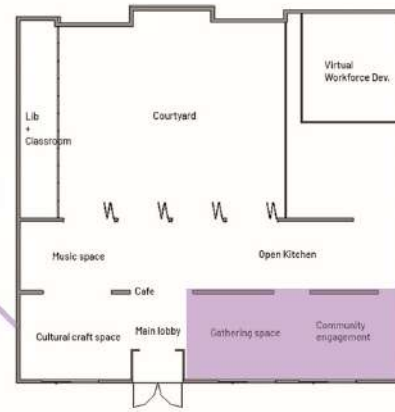
INDOOR + OUTDOOR EVENT



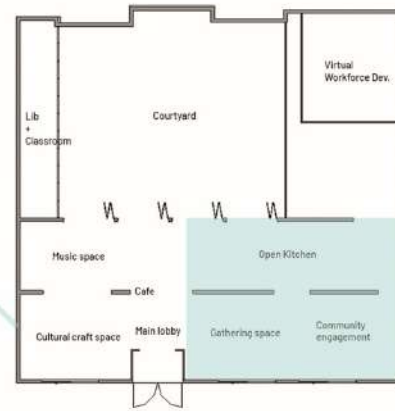
WEDDING & OUTDOOR GARDEN EVENT



INDOOR EVENT



CAREER FAIR / SMALL INDOOR EVENT

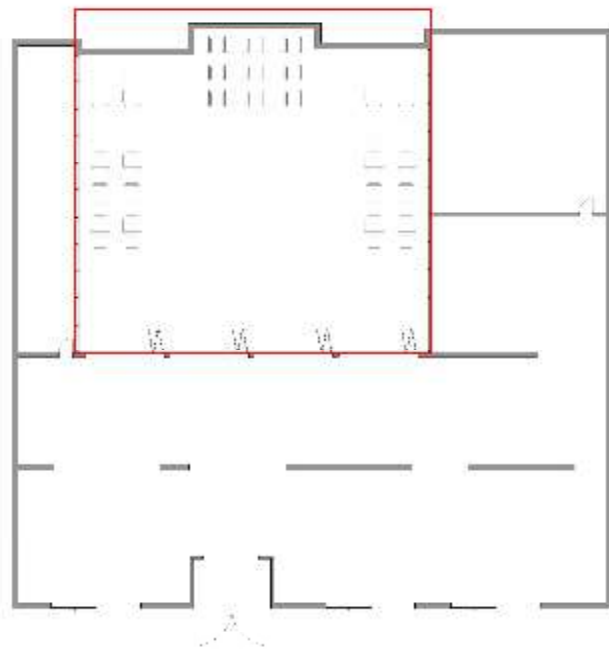


DINING EVENT



Sketches

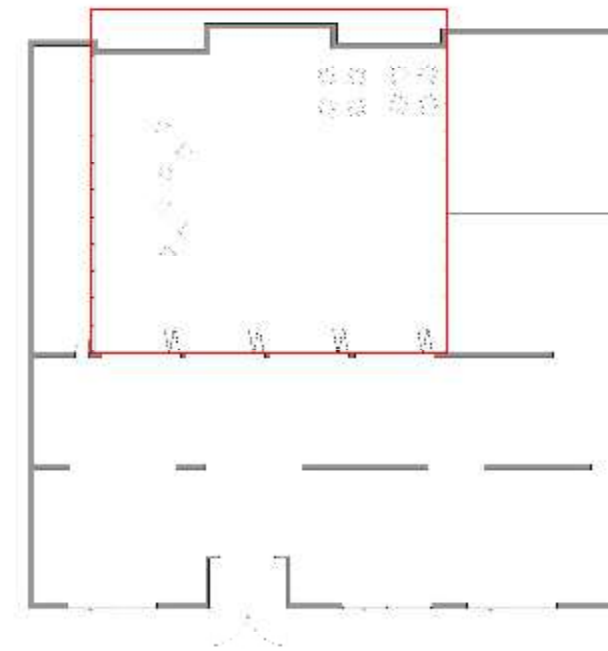
WEDDING DAY FLOOR PLAN



PERSPECTIVE



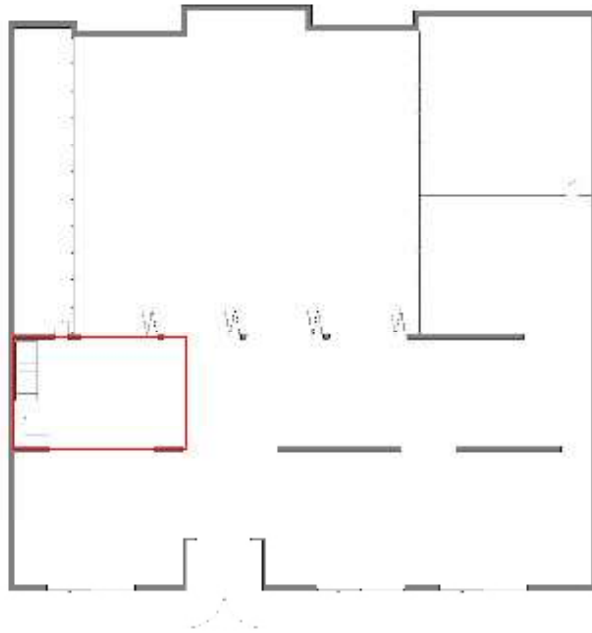
CASUAL DAY FLOOR PLAN



PERSPECTIVE



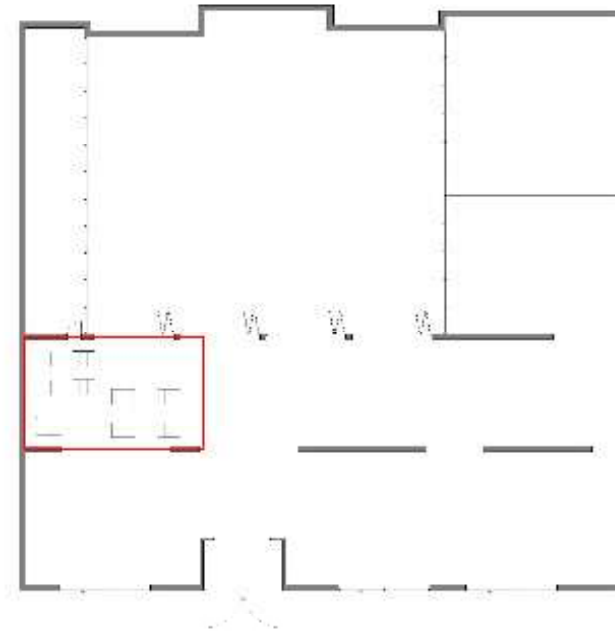
OPEN PERFORMATIVE SPACE LAYOUT



PERSPECTIVE



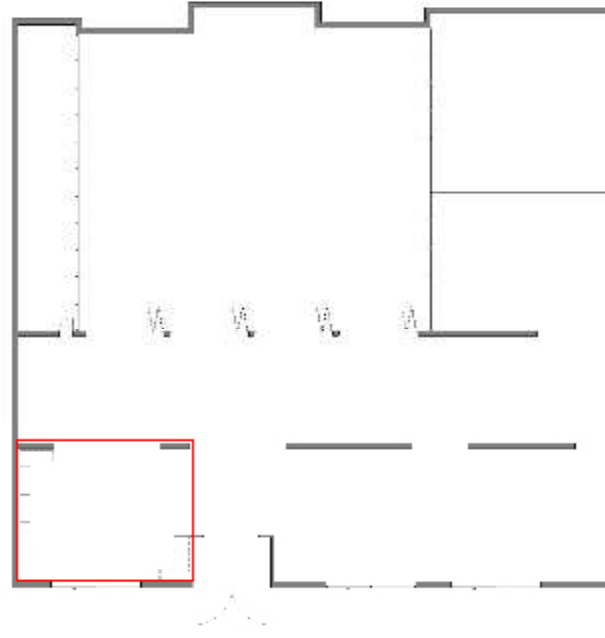
CLASSROOM FLOOR PLAN



PERSPECTIVE



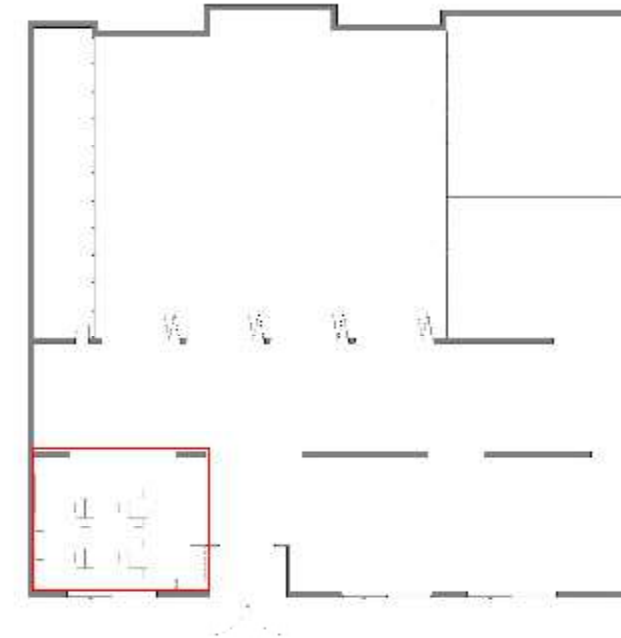
RETAIL STORE FLOOR PLAN



PERSPECTIVE



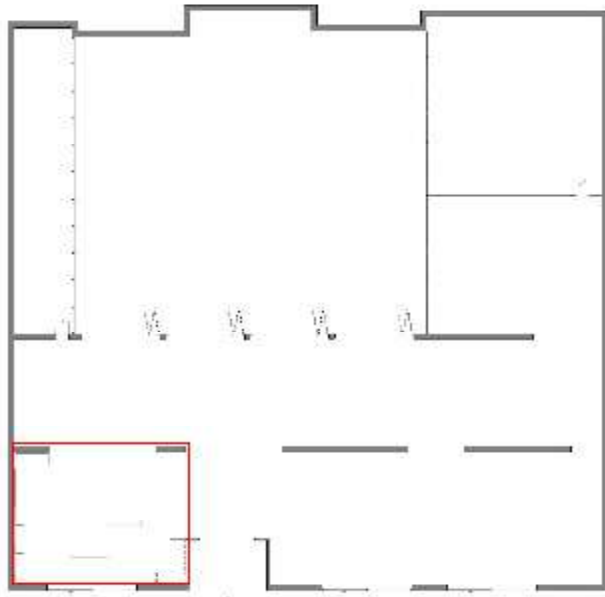
CLASSROOM FLOOR PLAN



PERSPECTIVE



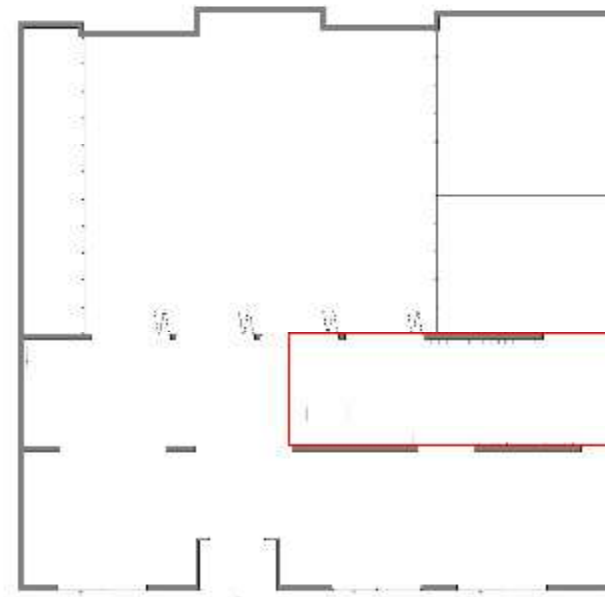
GALLERY SPACE FLOOR PLAN



PERSPECTIVE



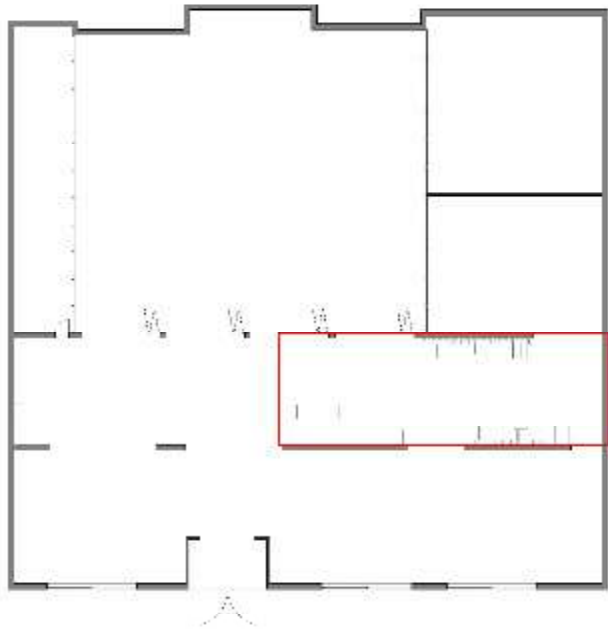
STANDING PARTY FLOOR PLAN



PERSPECTIVE



OPEN KITCHEN COOKING CLASS FLOOR PLAN



PERSPECTIVE



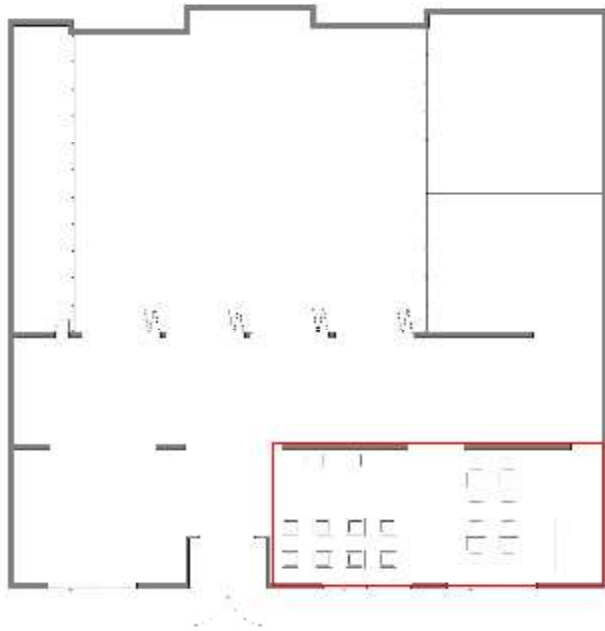
CASUAL DAY FLOOR PLAN



PERSPECTIVE



DINING FLOOR PLAN

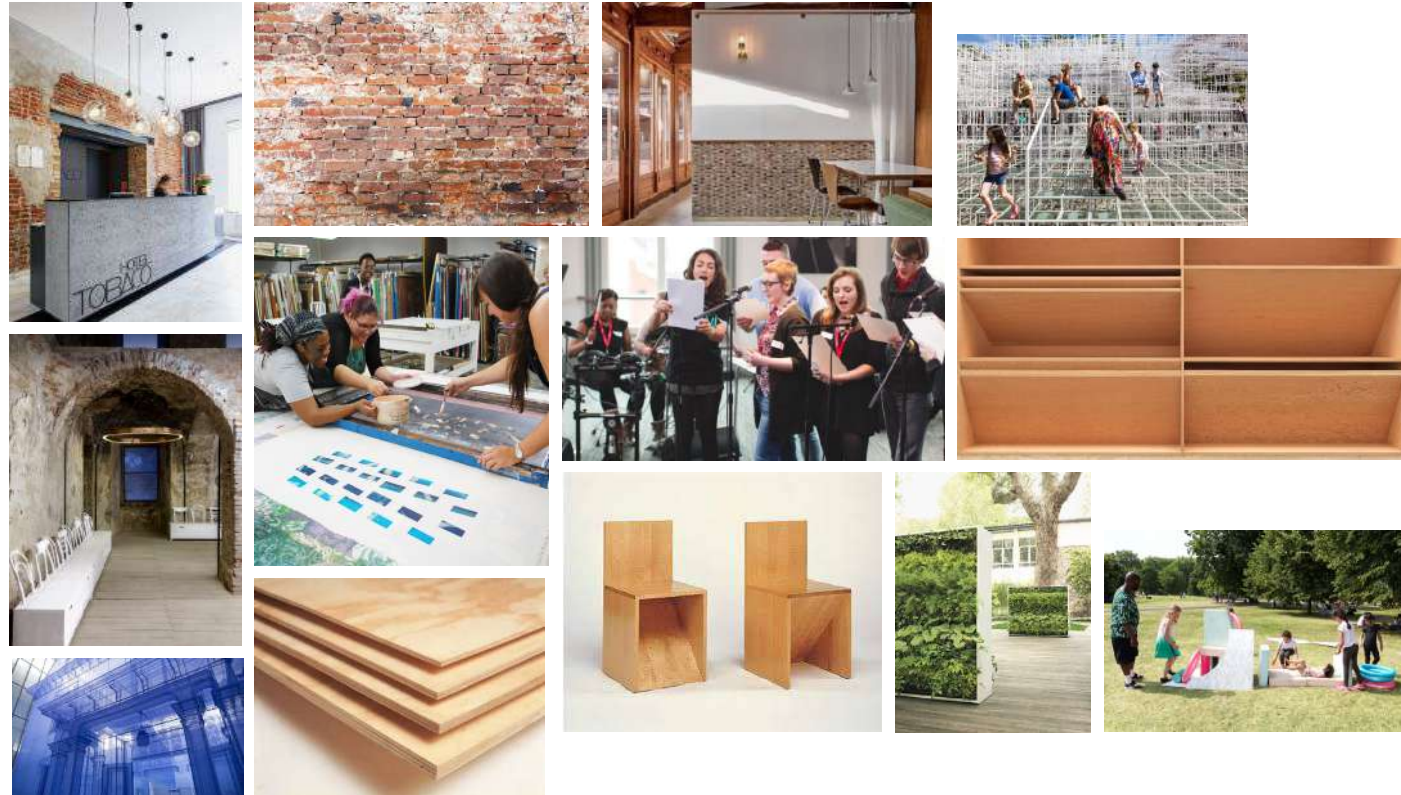


PERSPECTIVE



4 the design

Reference Images



Reference images demonstrate the mix of old and new materials in design through adapt and reuse & some images show welcoming atmosphere the project aims to accomplished as well as furniture system that will emphasize the intention of the building that accept the multi cultures.

Flexible Space + Adaptable Furniture

Each space is flexible to be rearranged with one another for various purposes and custom-made furnitures are highly adaptable as it serves more than one purpose to be used by various group of people and in various spaces.

Courtyard Tresholds



China



Vietnam



Dominican Republic

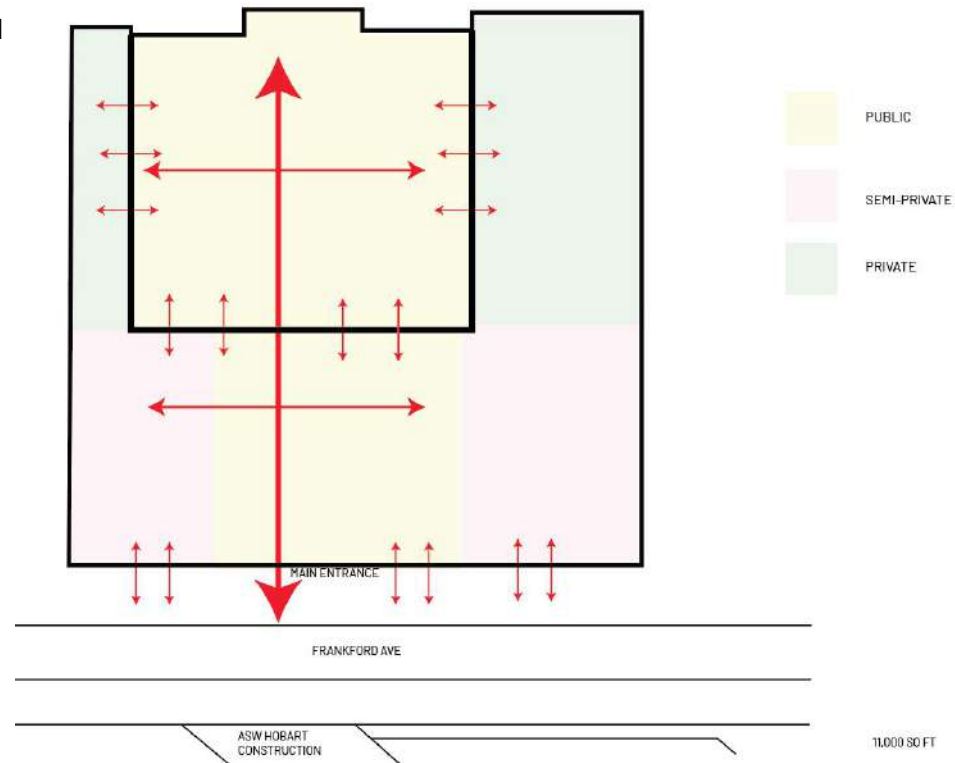


Mexico

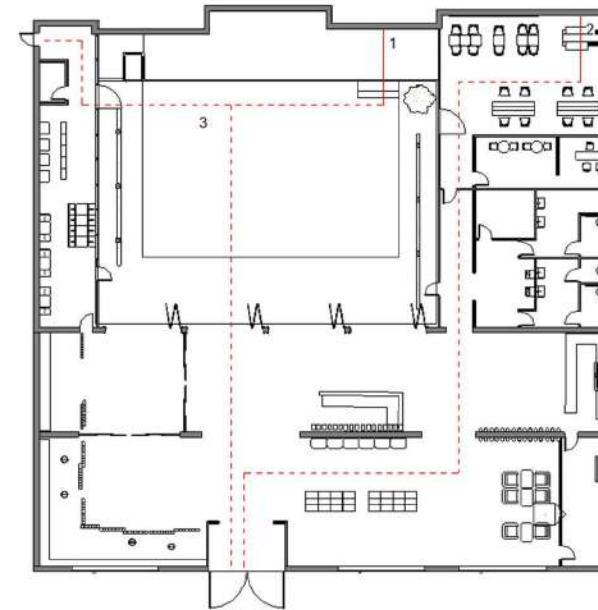


This creates very friendly open environment that people can engage in the outdoor in the protective ways- with some foster of some of the activities including eating, gathering...etc.

SPACE DIAGRAM



EXITING DIAGRAM



CODE SUMMARY - IBC 2018

USE GROUP: GROUP A-3 COMMUNITY HALL, GROUP E EDUCATIONAL, AND GROUP M MERCANTILE

NUMBER OF EXIT: 2

OCCUPANCY LOAD: 336

EGRESS

ROUTE 1

COMMON PATH OF TRAVEL: 14'-0"

EXIT ACCESS: 73'-6"

ROUTE 2

COMMON PATH OF TRAVEL: 12'-3"

EXIT ACCESS: 151'-8"

ROUTE 3

COMMON PATH OF TRAVEL: 14'-0"

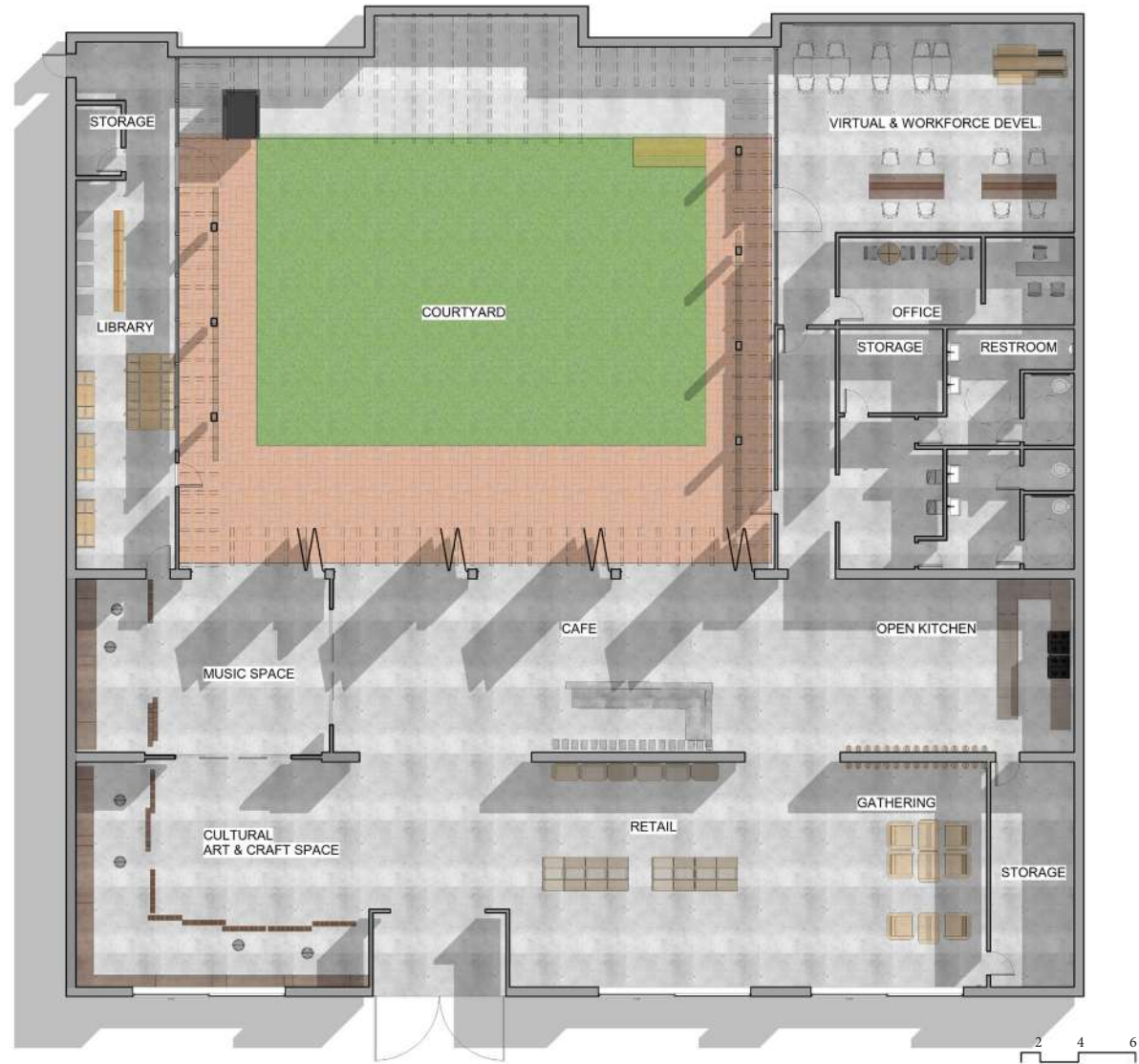
EXIT ACCESS: 112'-21"

LAVATORIES REQUIRED:

MALE: 1

FEMALE: 2

Floor plan



RCP



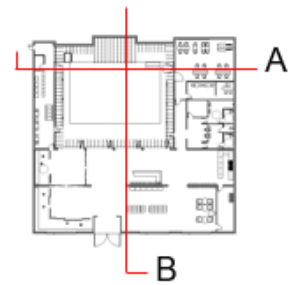
Sections



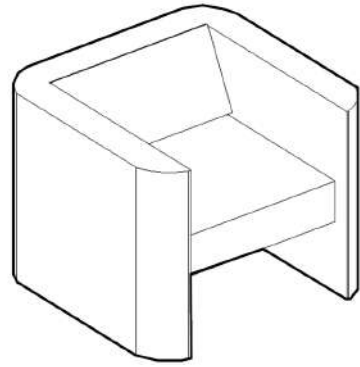
Section A-A



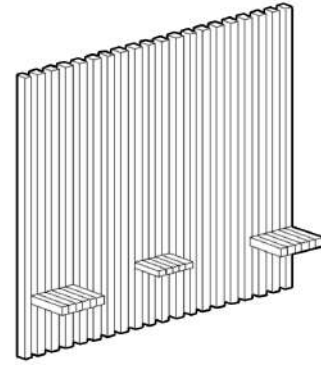
Section B-B



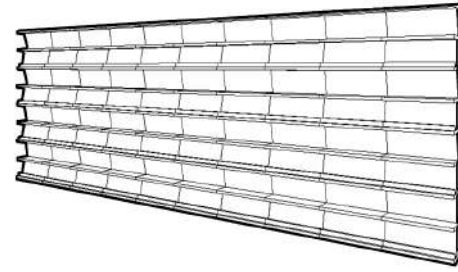
Furniture System



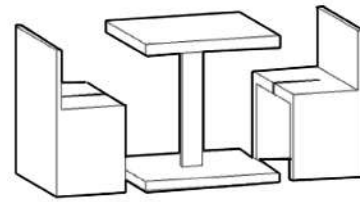
The Cube



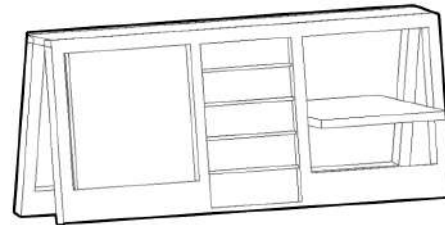
The Rising Table



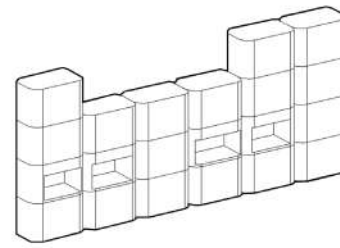
The Zig Zag



The Cuddle Table Set

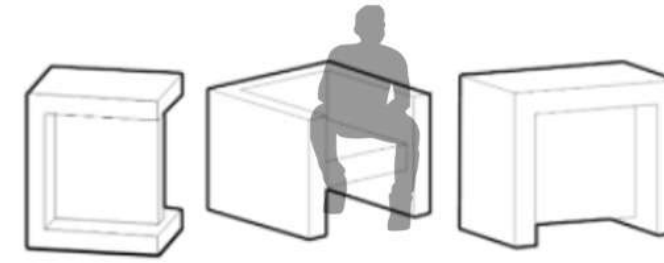


The Transformation



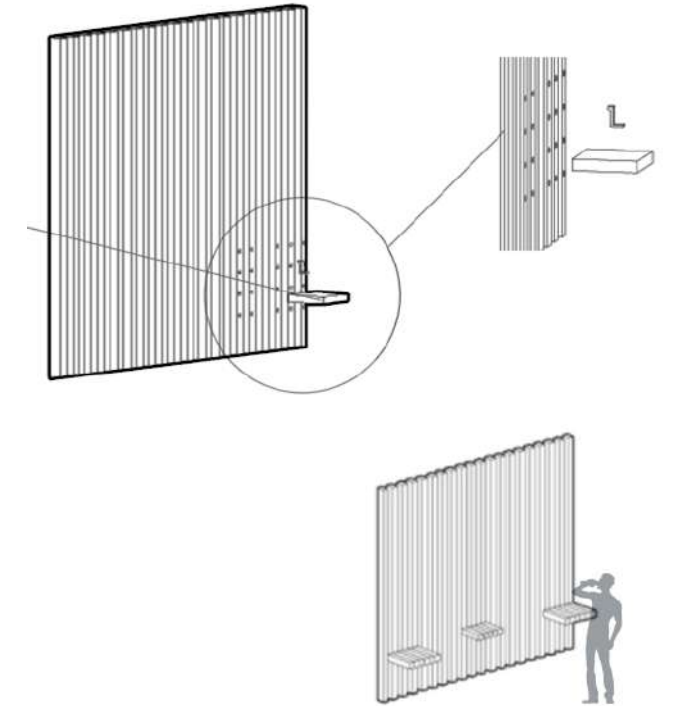
The Rising Box

The Cube



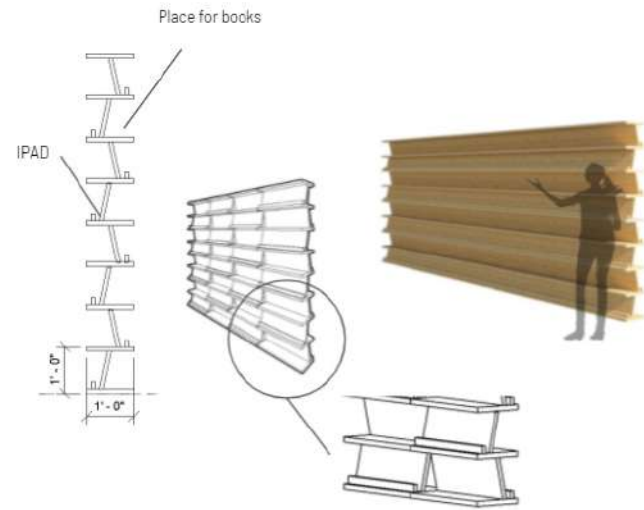
It is a multi-functional furniture. It can be used as a chair, a table, and shelf depending on people's needs. People can simply rotate it for their purpose.

The Rising Table



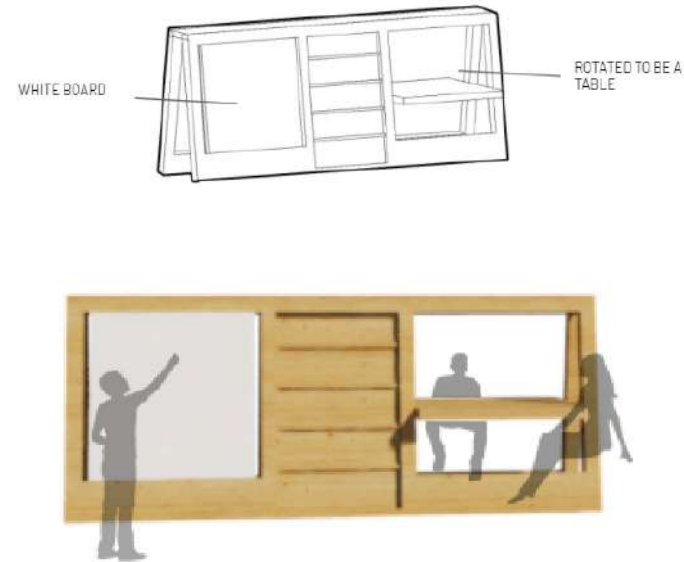
This wall will be used in the open kitchen space. It functions as sound-absorbing panel and attachable standing table when used with other furniture such as first furniture piece on this slide.

The Zig Zag



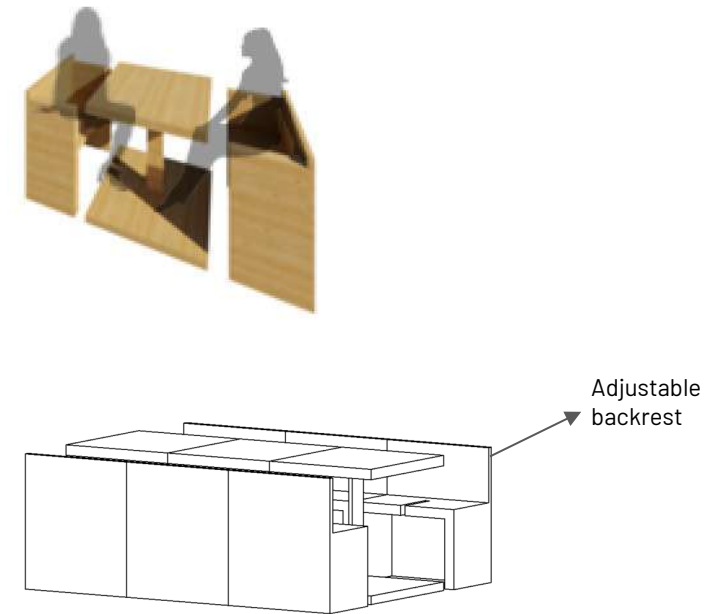
This shelf is designed to place tablets and books. The shape of structure X makes it more stable when supporting heavy weights.

The Transformation



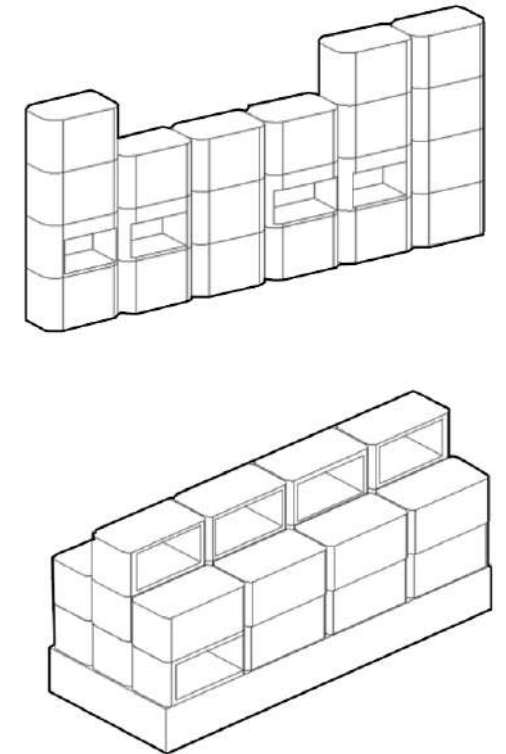
This furniture can be functioned as a table, whiteboard, and shelves. The rotatable pieces in the openings of both side can be rotated to serve various purposes - table and whiteboard.

The Cuddle Table Set



This cube-styled furnitures offers a nice set of coffee table when disassembled and a casual seating when assembled into one. It can also be a bench or long table when connected with more than one.

The Rising Table



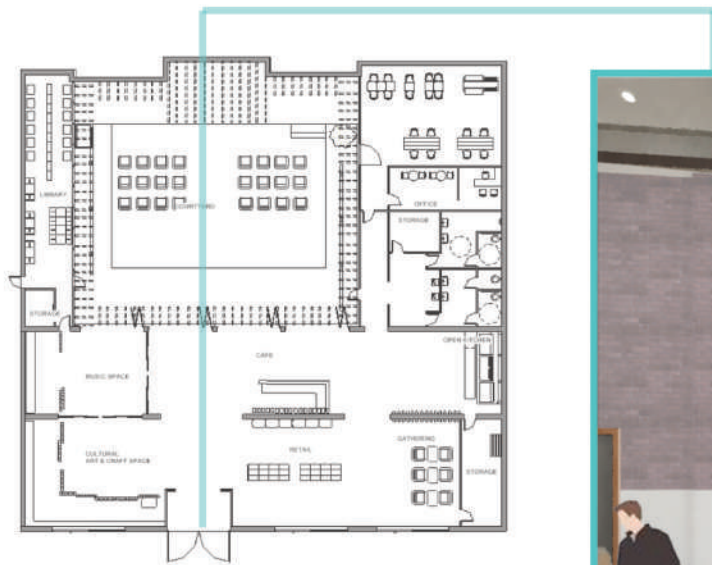
This Rising Box can be used to display artworks and store items in the form of shelves and a standing table when the space is being used for gathering space.

User Stories

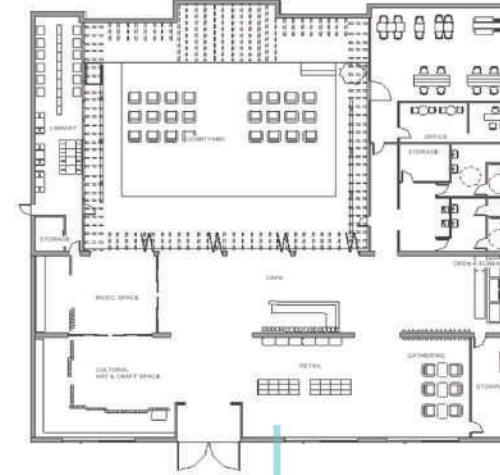
Justin's family on weekend



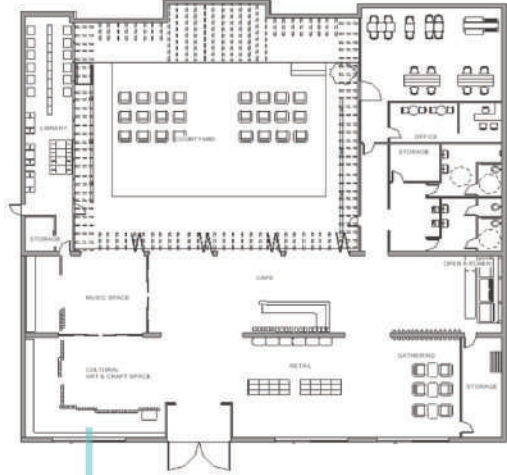
Justin's family has 3 family members including a daughter, wife and himself. They recently moved from China to the United States for his new job. They would love to make new friends to get familiar with a new country and living. The family's biggest challenge is to teach their daughter about their own culture as well . This is his family at the Fishtown Cultural Community center on the weekend.



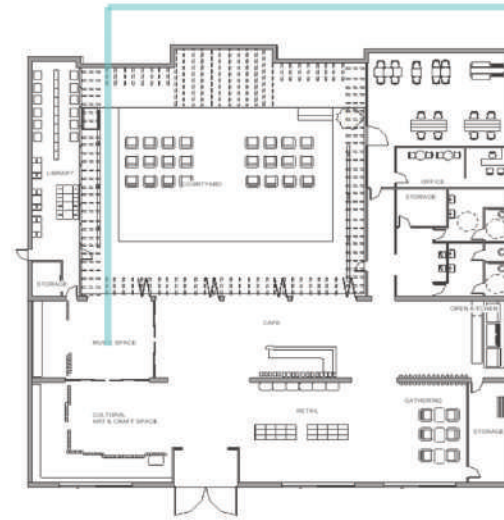
Justin's family comes in to the center every weekend to enjoy activities and to have a family time. A wide opening to courtyard welcomes his family!



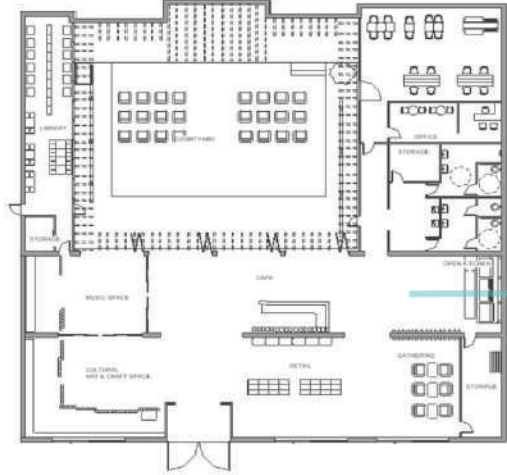
His wife loves to stop by a retail area to look through unique items that were made by people during art and craft program



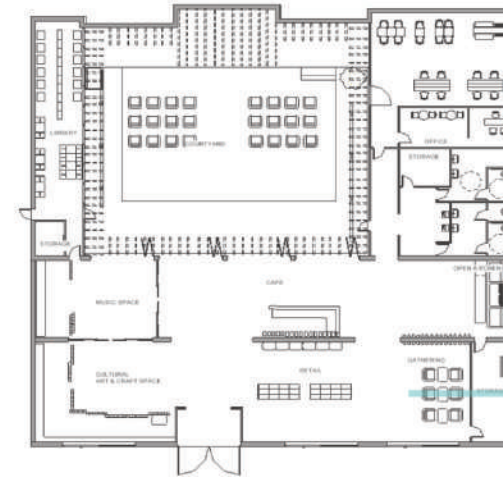
This is Justin's family learning a Mexican traditional paintings in art&-craft area.



While his daughter, Lisa, is learning violin from the program offered at the center, Justin and his wife enjoy the coffee time at the courtyard.



They can also make their favorite Chinese food from the open kitchen space. The center provides all the ingredients that they need.



After completing their dishes, they can enjoy their foods at gathering space.



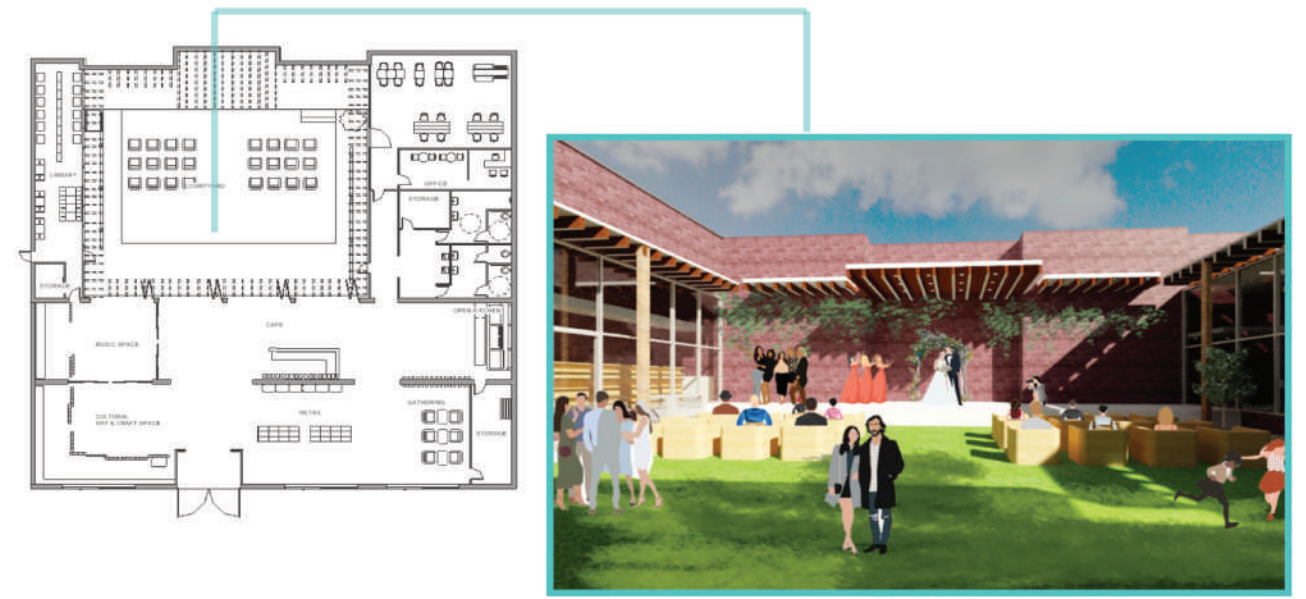
After all the activities, they want to spend some time at the courtyard. The courtyard has this beautiful large green area where people can gather around.



They love going to a virtual space to use large screen to make an international face time call. This is their way to endure a homesickness.



His wife's favorite time! The center often provides a cultural performance on the weekend including Korean traditional dance and Japanese music performance...etc. Justin grabs a coffee and some snacks from cafe and bringing it out to enjoy the performance together.

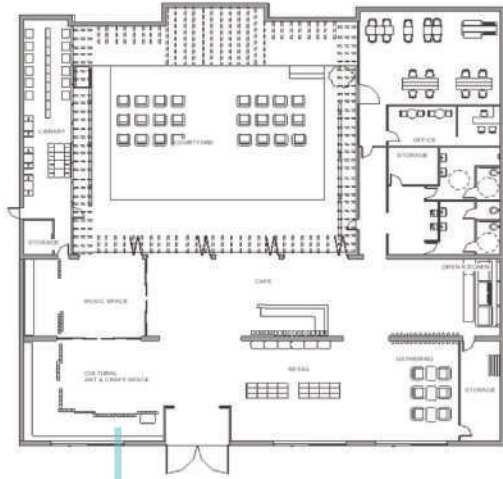


They also come in center on the weekends for their friend's wedding at the courtyard.

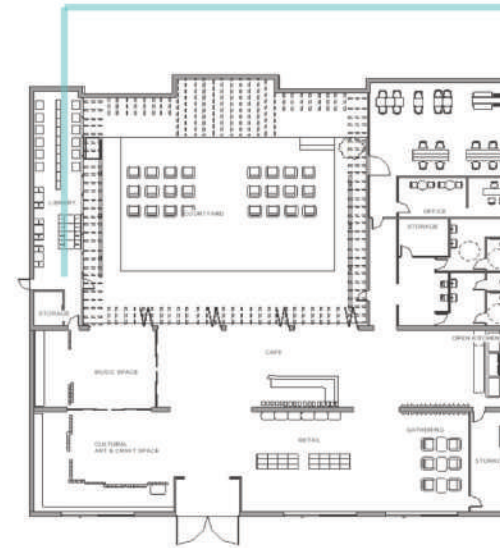
Lisa's afterschool program



Lisa is a 10-year-old girl from China. She visits the Fishtown Cultural Community Center twice a week for after school program that center provides for immigrant family. She gets to learn cultural art, history, and farming experience.



Lisa's parents are both working on weekdays, so they signed up for Lisa's afterschool program at center. This is Lisa taking art class.

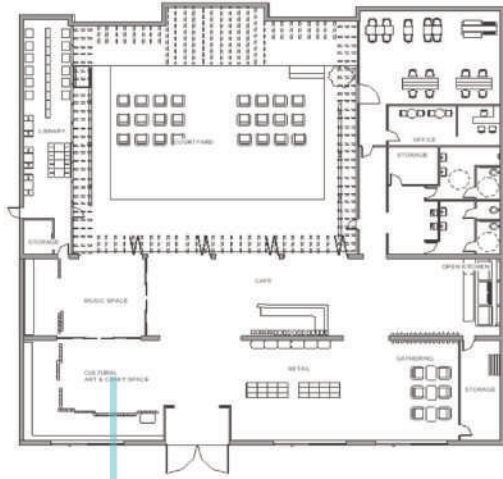


Lisa is more familiar with English since she came to the United States when she was a year old. This is Lisa learning a chinese language in the library. She gets to read and watch chinese books and videos!

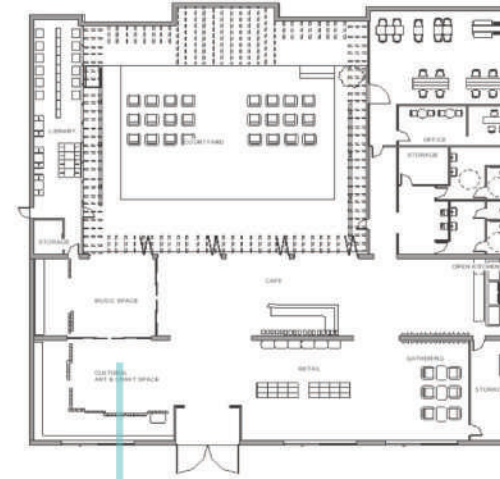
Woo's leisure time



Woo is an international student from South Korea. She misses seeing her family and friends in Korea. She wants to make new friends here. Furthermore, Woo enjoys cultural performance and artworks. She visits Fishtown Cultural Community Center every other weekend to enjoy artworks and performance from the center.



Woo loves the art exhibitions and the center provides free art exhibition once a month.



She also gets to see a traditional performance as well!

<https://ahyoung1185.myportfolio.com/>